



# Beprexit: Rethinking Repository Services in a Changing Scholarly Communication Landscape

---

*Laurie Allen, Director for Digital Scholarship*

*Sarah Wipperman, Scholarly Communications and Digital Repository Librarian*

*Kenny Whitebloom, Digital Scholarly Publishing Librarian*

*Margaret Janz, Scholarly Communications and Data Curation Librarian*

# Introductions



Scholarly  
communications

# Digital Scholarship

# Data management



# Digital Scholarship

# Scholarly communication

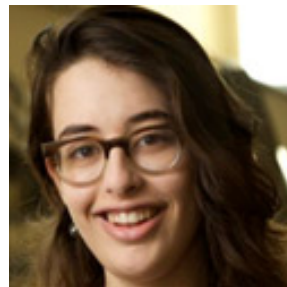


Data management

Mapping & spatial data



# Digital Scholar- ship



Scholarly communication

Digital Humanities

**Teaching,  
Research, &  
Learning**

**Digital  
Scholarship**

Fine Arts/Museum  
Libraries

Courseware

Information  
Literacy

Digital Media

**Teaching,  
Research, &  
Learning**

Collections &  
Liaisons

User Services &  
Resource  
Management

Library Technology  
Services &  
Strategic Initiatives

Kislak Center for  
Special  
Collections, Rare  
Books, &  
Manuscripts

# Overview



# We are planning to leave bepress

Photo by [Erwan Hesry](#) on [Unsplash](#)

This fall, the Penn Libraries will begin exploring open source options for hosting Penn's institutional repository, ScholarlyCommons, which provides free and open access to scholarly works created by Penn faculty, staff and students.

For 13 years, Penn Libraries has hosted ScholarlyCommons on the platform Digital Commons, which we contract from the commercial company bepress. Through ScholarlyCommons and other initiatives, the Penn Libraries has enabled Penn authors to lower barriers to accessing scholarship, publish new research, and take advantage of library services that benefit not only our own community but those around the world.

For 13 years, bepress was a partner in this endeavor. In August, bepress sold their company to Elsevier, a business with a history of aggressive confidentiality agreements, steep price increases, and opaque data mining practices. In their acquisition of bepress and other companies like SSRN and Mendeley, Elsevier demonstrates a move toward the consolidation and monopolization of products and services impacting all areas of the research lifecycle. We are worried about the long-term impacts from these acquisitions and are concerned that such changes are not in the best interests of the library community. Therefore, we feel obligated to begin exploring alternatives. With this decision, the Penn Libraries hopes to provide a better solution for openly sharing Penn's scholarship and asserting author rights.

We believe that scholarly research should be made freely available for the greatest global and local good. We wish to support a scholarly ecosystem in which authors can decide how to publish their work, and we will continue to provide platforms for Penn authors who find their work has greatest impact when it is shared openly and without barriers. We call on the academic community to join us in this endeavor—to partner with us, to collaborate, and to find solutions that align with our values as researchers, libraries, and universities and serve our collective communities' needs.



**We are not rushing**



Photo by [Andy Beales](#) on [Unsplash](#)

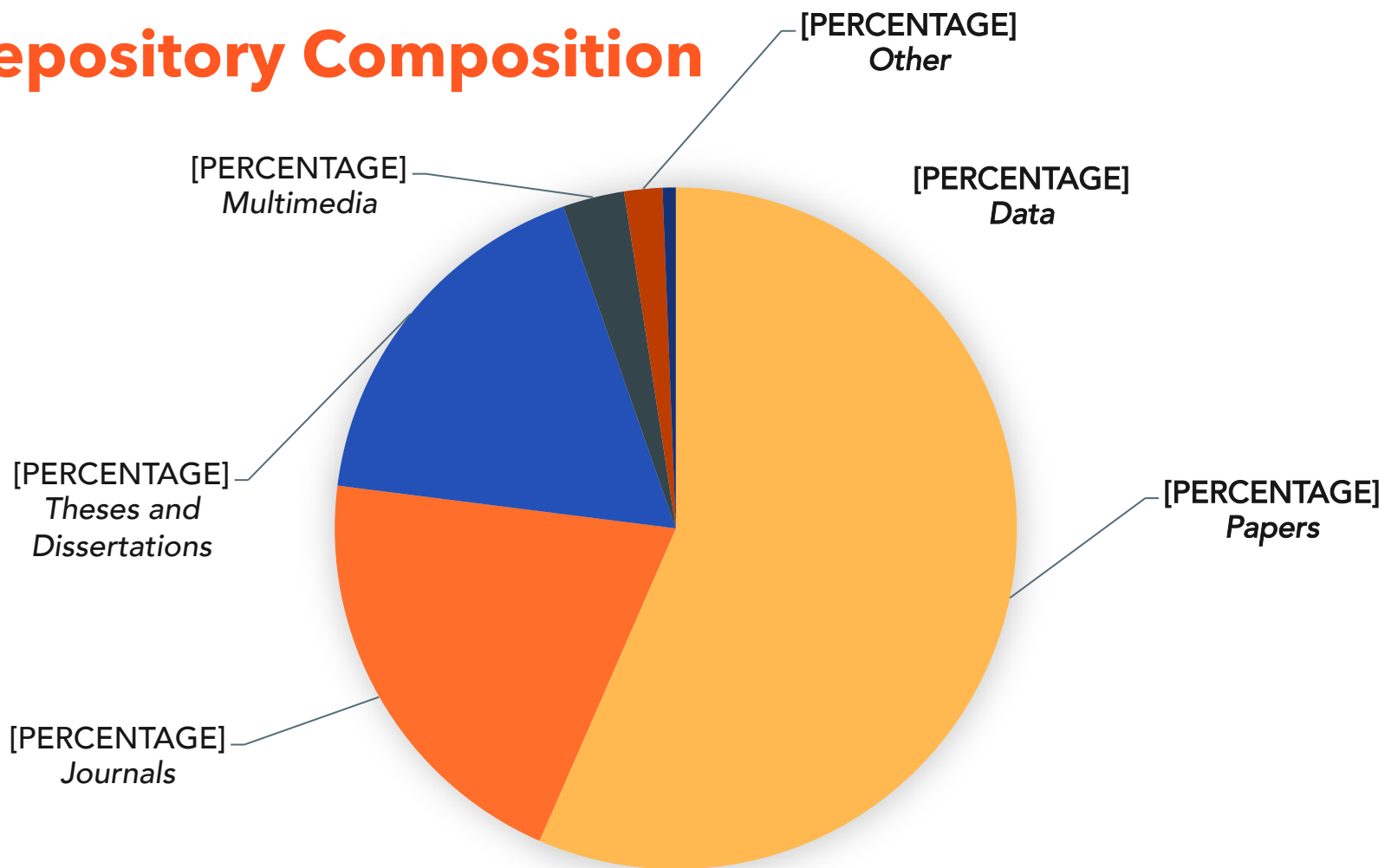
A Declaration by the Representatives of the UNITED STATES  
OF AMERICA, in General Congress assembled.

When in the course of human events it becomes necessary for <sup>one</sup> people to dissolve the political bands which have connected them with another, and to ~~assume among the powers of the earth the separate and equal station to which the laws of nature and of nature's God entitle them~~ as ~~one~~ <sup>separate and equal</sup> among the powers of the earth the ~~unanimous declaration~~ station to which the laws of nature and of nature's God entitle them <sup>in the</sup> recent respect to the opinions of mankind requires that they should declare the causes which impel them to ~~that~~ <sup>the</sup> separation.

We hold these truths to be <sup>self-evident;</sup> ~~that~~ <sup>undeniable,</sup> that all men are created equal & independent that <sup>they are endowed by their creator with</sup> ~~from that equal creation they derive~~ certain <sup>rights; that</sup> ~~unalienable~~ <sup>inherent</sup> ~~rights~~ <sup>unalienable</sup>, among <sup>these</sup> ~~which~~ <sup>which</sup> are ~~life, liberty & the pursuit of happiness~~ <sup>life, liberty & the pursuit of happiness</sup>

**We have a  
responsibility...**

# Repository Composition



Home

Search All Collection

Browse by Author

Browse  
Theses/Dissertations

My Account

Notify me of  
New Papers

Help

About

Related Links




[Collections by Research Unit](#) | [Journals](#) | [Thesis/Dissertations](#) | [Researcher Profiles](#)


## SEARCH

Enter search terms:



Advanced Search

 [Notify me via email or RSS](#)

## ABOUT

About ScholarlyCommons

Services

FAQ

Policies

Contact

## SUBMIT

Submit Research

Faculty Assisted Submission

Submission Instructions

## BROWSE

Collections

Subjects

Authors

Dissertations

## AUTHORS

Author Help

Upload to ScholarlyCommons

## RESOURCES

[Penn's Statement of Principles on Open Access](#)

[Penn Law Legal Scholarship Repository](#)

[Penn Digital Scholarship Group](#)

## GUIDES


ScholarlyCommons

Copyright

# OPEN ACCESS

ScholarlyCommons is the University of Pennsylvania's open access institutional repository for gathering, indexing, storing, and making widely available the scholarly output of the Penn community. Reflecting the core values of inclusion, innovation, and impact in the [Penn Compact 2020](#), ScholarlyCommons shares the exceptional works of Penn faculty, staff, and students with a local, national, and global audience. Access to ScholarlyCommons is free to all. ScholarlyCommons is a service of the University of Pennsylvania Libraries.

Join the ScholarlyCommons community!

 Philadelphia, Pennsylvania, United States

**ScholarlyCommons**

This map shows live readership activity for ScholarlyCommons. *Waiting for next download...*



### Real-time Readership

0

Downloads since  
3:58:39 PM

 Embed



[Terms of Use](#)

 [View Larger](#)

**34,720**  
Total Papers

**13,564,764**  
Total Downloads

**2,144,531**  
Downloads in the past year

of the day  
of the polar surface  
nanostructure  
and morphology

Nam, D. Tham, and  
Fischer  
ental Papers (MSE)

all 3192 papers

-text downloads of  
y content in the last

iently downloaded  
S  
recent papers

**By 2017, ...the Library  
will be known for a well-  
articulated portfolio of  
researcher services.**

*mediated deposit*

*permissions*

*build collections  
for research*

# researcher services

*open access  
support*

*copyright and  
author rights*

*access to  
dissertations*

# Refining the services-oriented approach



**Standardized workflows for  
mediated faculty deposit**

**Comprehensive student employee  
training program**

**Clearly articulated repository  
services and outreach materials**


**Identifying  
unmet needs**


**Support for researcher **data** and  
data-intensive projects**


**Interactive publications and **non-  
traditional digital projects****


**Multimedia and other **large file  
types****

# The Stars Align

Organizational restructure 

 Growing demand

More staff support 

 Streamlined training and workflows

How do  
we want  
to **grow**?



What does  
our future  
IR look  
like?

Elsevier acquires bepress, a leading service provider used by academic institutions to showcase their research

*Bepress to benefit from Elsevier's technology and analytics to expand offerings to more institutions, while helping Elsevier drive further adoption of its research data management tools*



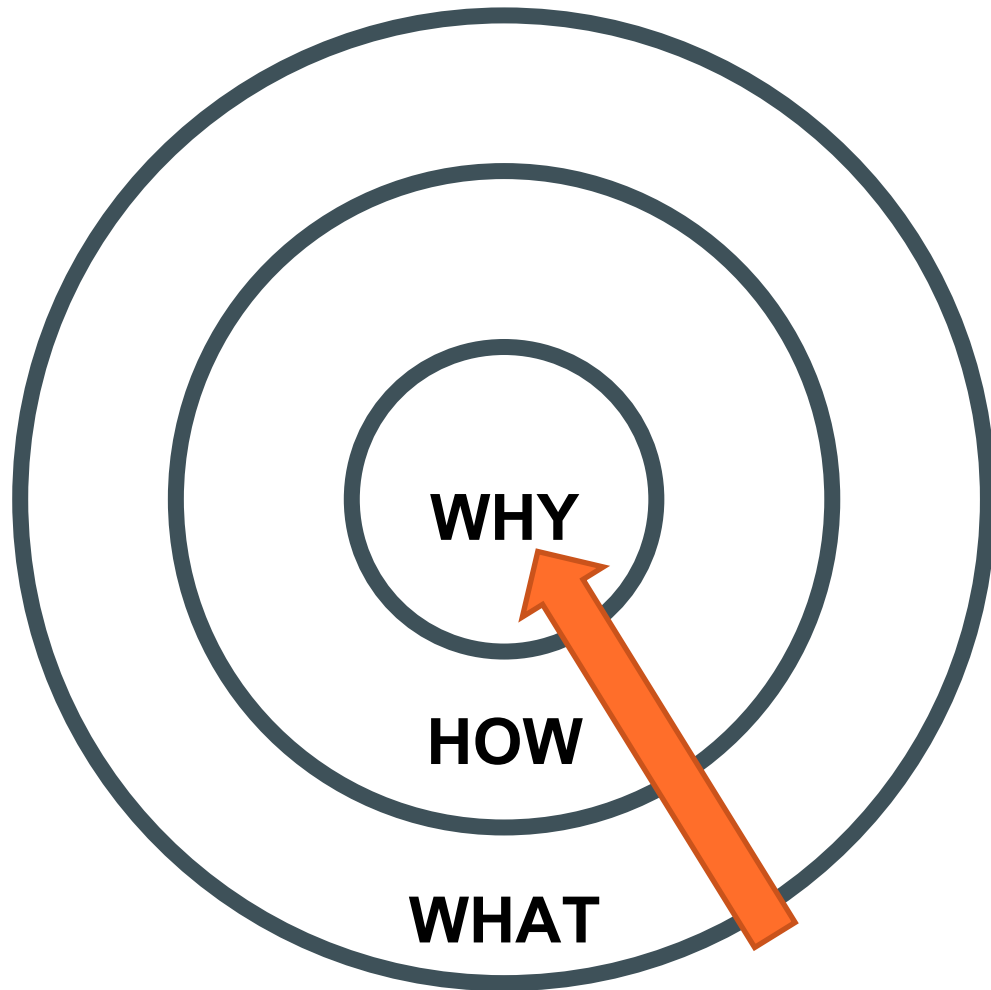
# Opportunity



# Our Approach



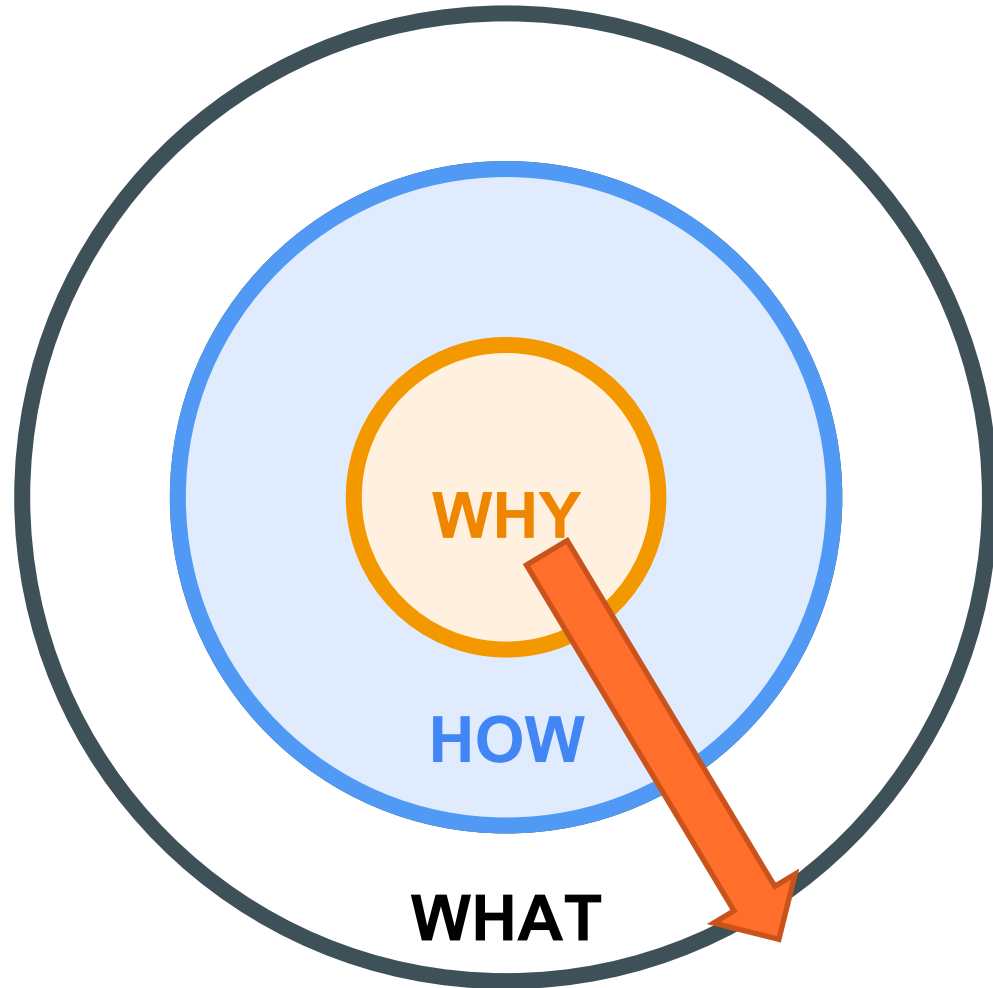
Simon Sinek's  
**Golden  
Circle**

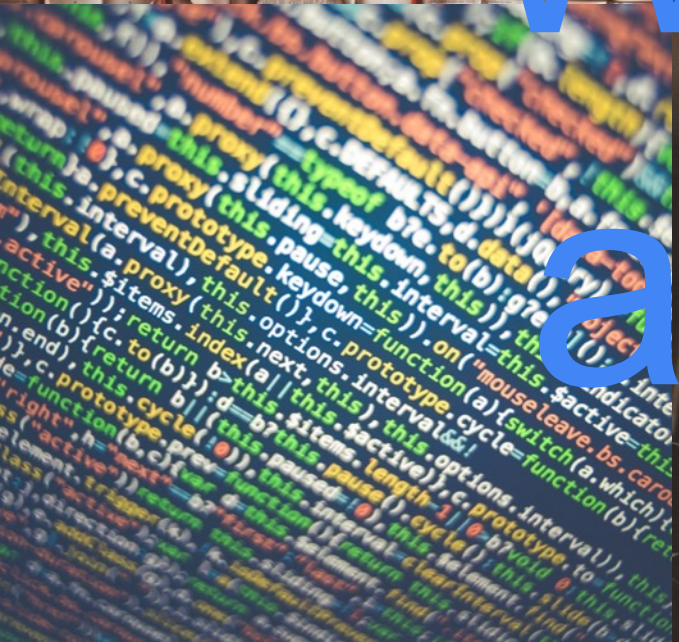


“People don’t buy **WHAT** you do...

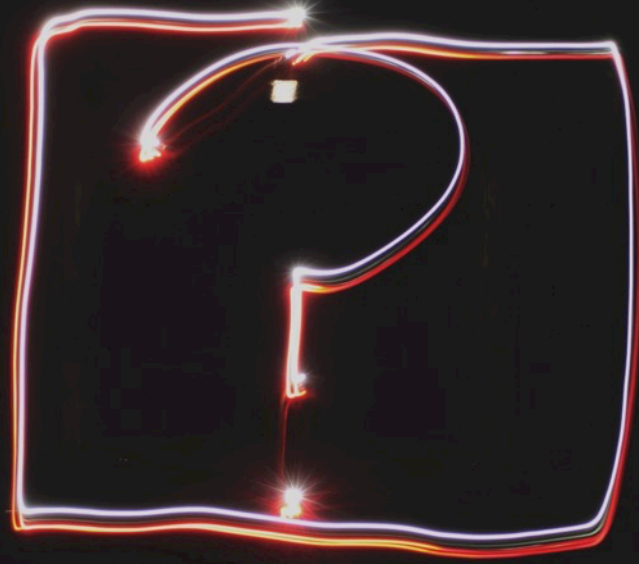
They buy **WHY** you do it.”

*-Simon Sinek*





# Library Stewardship

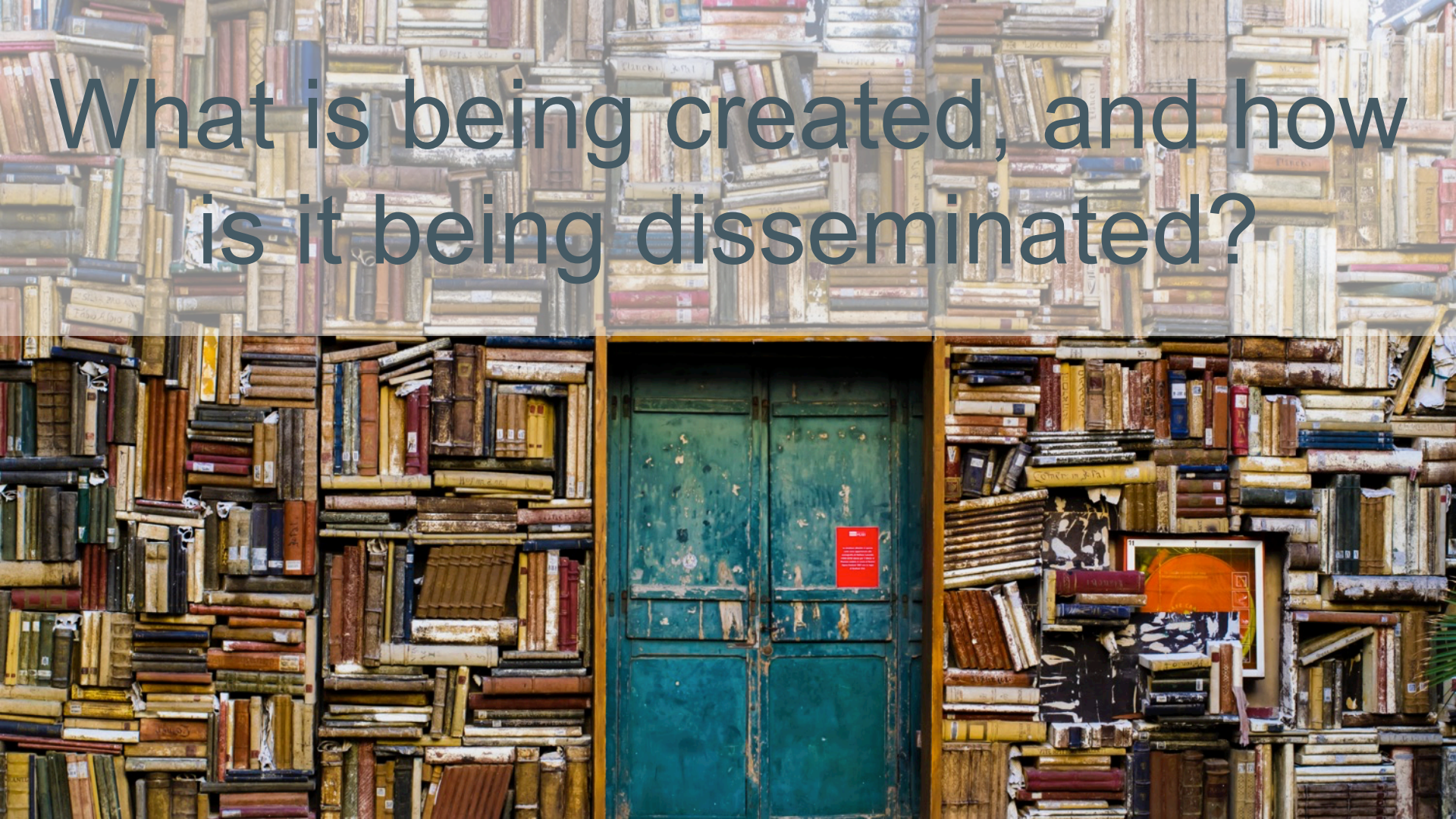


We have questions.

Before we plan...we learn.



What is being created, and how  
is it being disseminated?

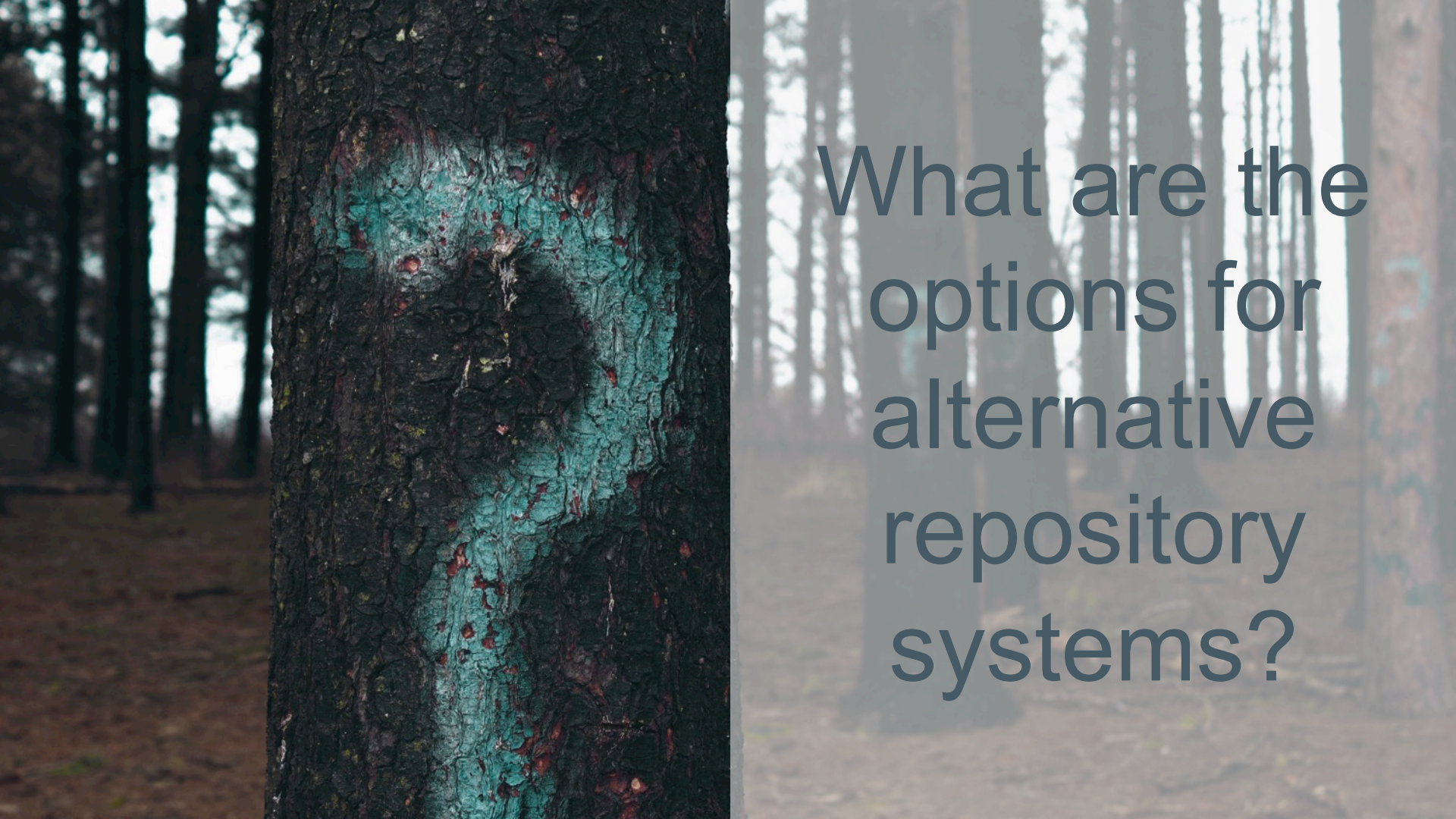




What are  
**current uses,**  
**needs,** and  
**desires** for new  
repository  
systems?





A close-up photograph of a tree trunk. The bark is dark and textured. A vertical strip of the bark is painted or stained a vibrant teal color. The background is a blurred forest scene with many thin tree trunks and some foliage.

What are the  
options for  
alternative  
repository  
systems?

# Taskforce

## Charge

This taskforce is charged with carrying out an environmental scan and campus discovery research over a **9 month period**. The taskforce will research platform options; explore collaboration opportunities; and ascertain the Penn community's current uses, needs, and desires for repository services.

## Goals

- Learn about current uses of ScholarlyCommons and collaboration opportunities
- Determine user needs and desires for new repository services
- Conduct an environmental scan of platform options, requirements, and feasibility (staff, time, cost, etc.)
- Benchmark services we have offered or could offer against institutions included in the environmental scan

# Research

User Research

Environmental Scan

Surveys → Interviews → Design thinking

## Conversations and Collaborations



# Making things open



[beprexit.wordpress.com](http://beprexit.wordpress.com)



[@beprexit](https://twitter.com/beprexit)



**Re-imagine the **scope** of what we  
collect**

**Consider scholarly expression at a  
range of **scales****

**Accept the need for **multiple** tools,  
**platforms**, and approaches**

## Building refuge for federal climate & environmental data

**Scope**  
DataRefuge helps to build refuge for federal data, supports climate and environmental research and advocacy. We're committed to fact-based arguments. DataRefuge preserves the facts we need at a time of ongoing climate change.

This site is one part of the project. The vast majority of the government information gathered through this project is available from the Internet Archive through the [End of Term project](#). This data catalog is a place to store data that is difficult or impossible to harvest through web crawlers. Beginning to add difficult data to this websites is one of the tasks of the DataRescuePhilly event on January 13th and 14th.



**Stewardship in the “Age of Algorithms”**  
**by Clifford Lynch**





**Multiple  
scales**

ALWAYS ALREADY

HOME

TEAM

PARTNERS

EVENTS

RESOURCES

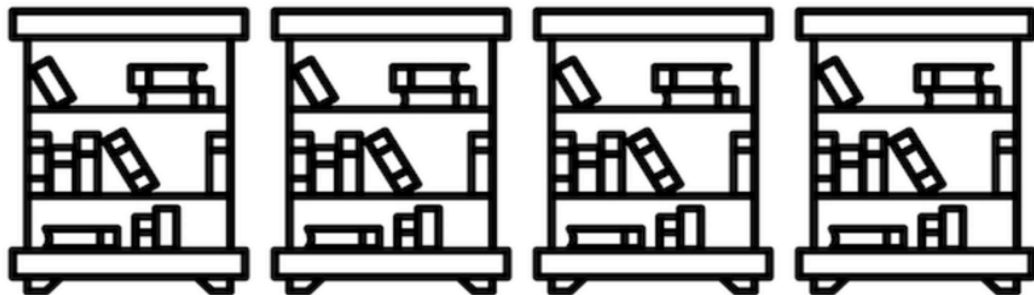
UPDATES

COMPUTATIONAL - COLLECTIONS

AS DATA

# Always Already Computational

---



**Collections as Data** is an Institute of Museum and Library Services supported effort that aims to foster a strategic approach to developing, describing, providing access to, and encouraging reuse of collections that support computationally-driven research and teaching in areas including but not limited to Digital Humanities, Public History, Digital History, data driven Journalism, Digital Social Science, and Digital Art History.

[collectionsasdata.github.io](https://collectionsasdata.github.io)

**Unstable** resources

### Projects at Price Lab

Currently Funded

Completed Funding

Other DH Projects at Penn

RESEARCH ▼

EDUCATION ▼

FELLOWSHIPS ▼

ABOUT ▼

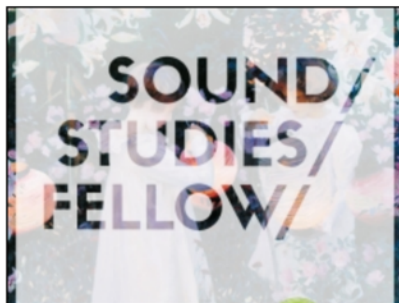
CALENDAR ▼

RESOURCES

🔍 Search



Tweets by @PennPriceLab



#### Paraphonotext in the PennSound Archive

**Orchid Tierney**

Unearthing new connections in poetry from the PennSound Archive.



#### Baroque Topologies

**Andrew Saunders**

Preparation for an international traveling exhibition of the research on Baroque Architecture.



#### Python in the Archives

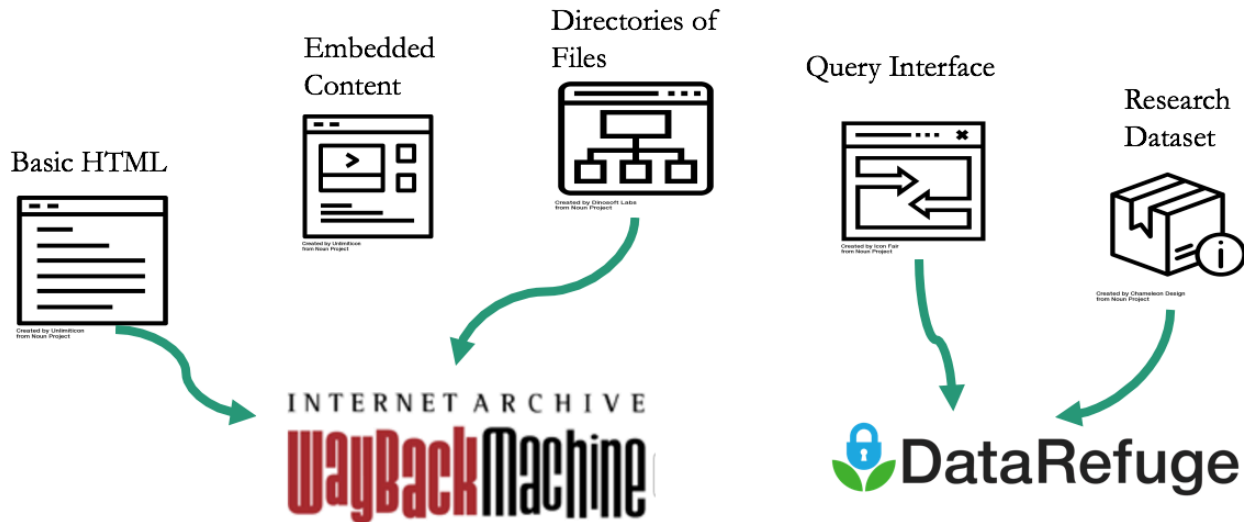
**Sudev J Sheth**

Synthesizing approaches in data science with historical questions and primary sources from early-modern India (AD 1352-1850).

# **Variety of platforms**



Federal data  $\cong$  webpage



**Platforms**

**Functions**

**Services**





to by [Dakota Corbin](#) on [Unsplash](#)



