

# Preserving & Using Email of Historical or Cultural Value with ePADD

Glynn Edwards, Assistant Director

Dept. of Special Collections & University Archives

*CNI Meeting – April 2018 – San Diego, CA*



ePADD





## EMAIL COLLECTIONS



1) Susan Sontag photographed in her home 1979 ©Lynn Gilbert – collection at UCLA; 2) Helen & Newton Harrison papers at Stanford Libraries; 3) Robert Creeley by Elsa Dorfman. Portrait taken in 1972; 4) Richard Fikes, profiles.Stanford.edu; 5) [Ian McEwan](#), a British writer, photographed during the 2011 Paris book festival.

## Business

# The Immortal Life of the Enron E-mails

A decade after the Enron scandal, the company's internal messages are still helping to advance data science and many other fields.

by Jessica Leber July 2, 2013



## NEWS

Home Video World US & Canada UK Business Tech Science Stories Entertainment

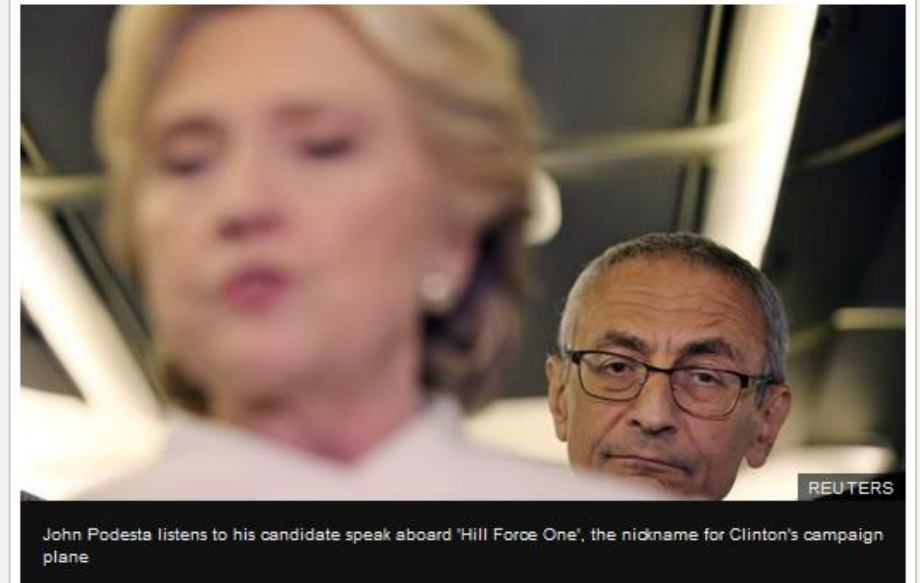
### US & Canada

## 18 revelations from Wikileaks' hacked Clinton emails

27 October 2016

f t v e Share

US Election 2016



John Podesta listens to his candidate speak aboard 'Hill Force One', the nickname for Clinton's campaign plane

Wikileaks has been releasing hacked emails from the account of Hillary Clinton's campaign boss. What do they say?

# AIMS Born-Digital Collections: An Inter-Institutional Model for Stewardship

January 2012

University of Hull  
Stanford University  
University of Virginia  
Yale University



## The AIMS Framework: The Functions of Stewardship

### 1. Collection Development

Donors and Trust: University of Hull  
Enhanced Curation at the British Library

### 2. Accessioning

Evolution of Accessioning at University of Hull  
Project Xanadu: Loss and Recovery

### 3. Arrangement and Description

Technical Development: Functional Requirements for Arrangement and Description  
Arrangement and Description Case Study: The Papers of Stephen Gallagher

### 4. Discovery and Access

Visualizing Email Access: MUSE  
Access models (Table 1)  
Publication Pathway and Discovery and Access at the Bodleian Library  
Discovery models (Table 2)



CM001.JPG



CM002.JPG



CM003.JPG



CM004.JPG



CM011.JPG



CM012.JPG



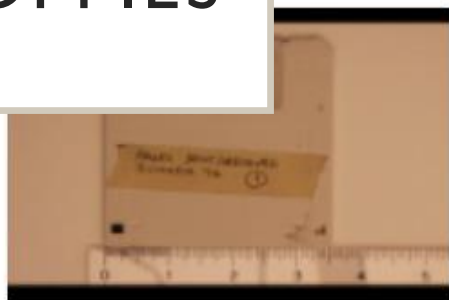
CM007.JPG



CM008.JPG



CM015.JPG



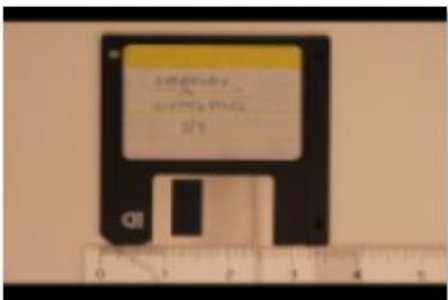
CM016.JPG



CM013.JPG



CM014.JPG



CM015.JPG



CM016.JPG



CM017.JPG



CM018.JPG

# ROBERT CREELEY - FLOPPIES



# MUSE: MEMORIES USING EMAIL

## Revive Precious Memories Using Email.



**Reminiscence about the past.**  
Uncover long-forgotten topics and people across tens of thousands of messages in your email.



**Chart your sentiments.**  
See the highs and lows in your life, as captured in your email.



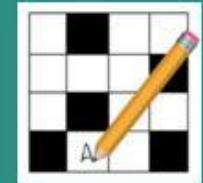
**See the people in your life.**  
Find out how different groups enter and leave your life.



**Browse your attachments.**  
Watch your email attachments materialize on the Piclens 3D photo wall.



**Highlight text on web pages.**  
Connect your browser to your archive and personalize web pages by highlighting terms in your email.



**Solve a personal crossword.**  
Stimulate your memory and solve a puzzle created from your own archive.

Download:

MUSE FOR WINDOWS

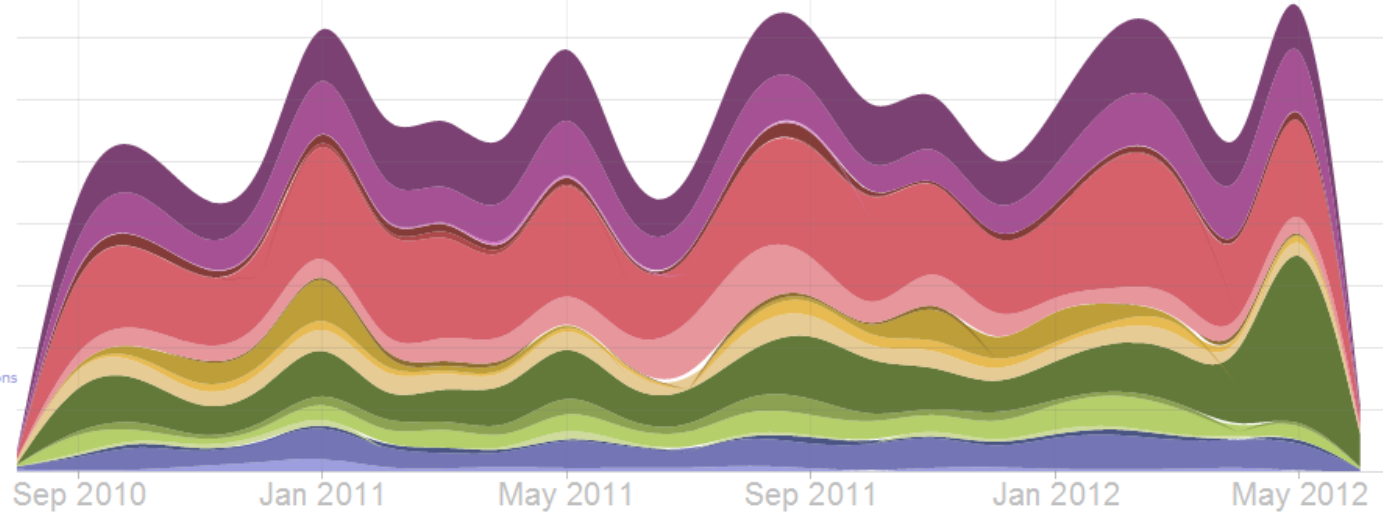
MUSE FOR MAC OS X

MUSE FOR JAVA

# MUSE - VISUALIZATIONS

669 messages/month

- negEmo
- posEmo
- grief
- anger
- emergency
- racy
- medical
- vacations
- love
- festivals
- religion
- family
- life event
- confidential
- memories
- milestones
- surprise
- superlative
- congratulations



CLICK to summon/dismiss the jog dial. Rotate it to move between messages. Or use ← and → keys. (Shift) TAB for (previous) next month.

- sentiments
  - medical (2141)
  - negEmo (481)
  - life event (407)
  - posEmo (383)
  - superlative (215)
  - MORE
- groups
  - trujillo (250)
  - pchan3+5 (222)
  - pchan3 (173)
  - pchan3+1 (171)
  - pchan3+15 (167)
  - MORE
- people



335/2141



Date: January 3, 2011 3:06pm  
 From: Glynn Edwards <gedwards@stanford.edu>  
 To: Debra D Fox <debrafox@stanford.edu>  
 Tim Noakes <tnoakes@stanford.edu>, Maria Grandinette <mgrand@stanford.edu>  
 Cc: Edgar Maxion <emaxion@stanford.edu>, Roberto Trujillo <trujillo@stanford.edu>, pernell <pernell@stanford.edu>, Peter Blank <ppb@stanford.edu>  
 Bcc: Glynn Edwards <gedwards@stanford.edu>  
 Group: pchan3+35  
 Subject: Re: Housing for Mark Adams Cartoons

Hi Deb,  
 Happy New Year!

I think we need to consider first where these cartoon boxes would be permanently stored. They will be too big to sit on to

# IN THE SONTAG ARCHIVES

By Benjamin Moser January 30, 2014



Throughout her life, Susan Sontag filled her journals with lists of vocabulary (“integument,” “snap brim fedora,” “gruel,” “persiflage”) that she encountered in her reading and travels. These lists, and the journals that contain them, can be consulted much as researchers have always consulted literary archives: by turning up at the library—in this case, the Department of Special Collections at the Charles E. Young Research Library, at U.C.L.A.—filling out some forms, and waiting while the desiderata are fished from the stacks.

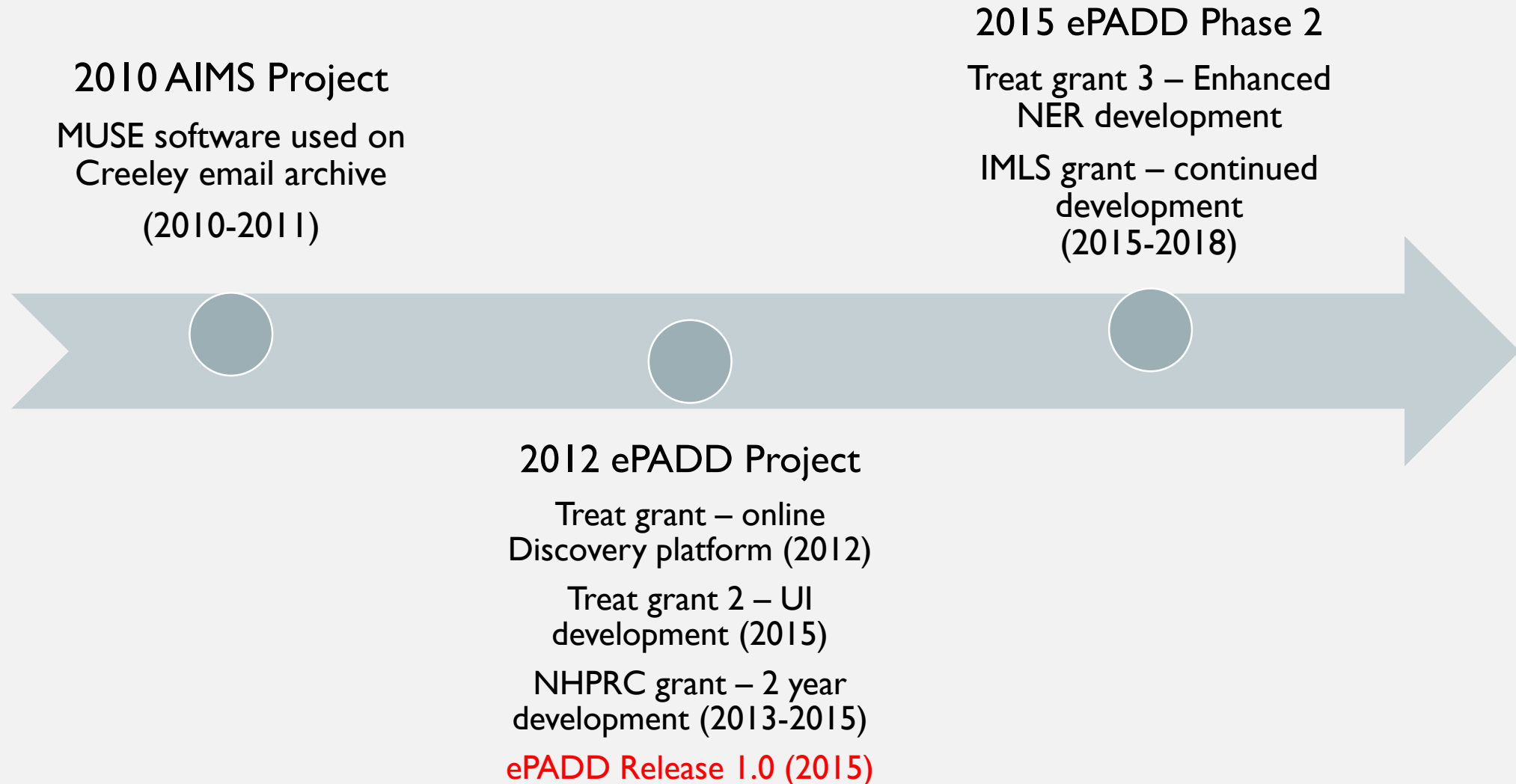


A Brazilian expression will sound familiar to anyone who using a collection as vast as Sontag’s: “implacable archives.” Los Angeles in early January to work on my forthcoming Sontag, I figured that three months would be plenty. For I have been reading her work and travelling, mainly in Europe and America, to meet the people who could help me reconstruct myself.

I am familiar with these concerns, and have always borne them in mind. Still, reading papers and manuscripts is one thing. Looking through someone’s e-mail is quite another, and the feeling of creepiness and voyeurism that overcame me as I sat with Gonzalez struggled with the unstoppable curiosity that I feel about Sontag’s life. To read someone’s e-mail is to see her thinking and talking in real time. If most e-mails are not interesting (“The car will pick you up at 7:30 if that’s ok xxx”), others reveal unexpected qualities that are delightful to discover. (Who would have suspected, for example, that Sontag sent e-mails with the subject heading “Whassup?”) One sees Sontag, who had so many friends, elated to be in such easy touch with them (“I’m catching the e-mail fever!”); one sees the insatiably lonely writer reaching out to people she hardly knew and inviting them to pay a call. In their reactions, one reads their bemusement, how hesitant they were to bother the icon, with her fearsome reputation.

With the software available today, the biographer who strives to put himself in the position of his subject is faced with new conundrums. One of the most intriguing tools that Gonzalez deploys is a program called *MUSE*, which can search an e-mail database and map the writer’s feelings with uncanny accuracy. You can see categories such as “medical,” “angry,” and “congratulations”; you can see, on a graph, what percentage of the time in May, 2001, for example, Sontag was happy or sad or upset.

# EPADD – CONCEPTUAL TIMELINE



# NHPRC (Phase 1)

ePADD

+

## About ePADD Phase 1 Development

About

NHPRC (Phase 1)

Download

Documentation

Community

+

Advisory Board

Presentations & Publications

In the News



ePADD Phase 1 was developed from 2013-2015 by staff of the Department of Special Collections and University Archives, Stanford University Libraries (SUL), Stanford University.

The software was developed with grant funding provided through the National Historical Publications and Records Commission (NHPRC). Additional funding was provided through SUL's Payson J. Treat Fund for Library Program Development and Research.

## NHPRC Grant Collaborators

*Terry Catapano, Stephen Davis, & Dina Sokolova, Columbia University*

*Riccardo Ferrante & Lynda Schmitz Fuhrig, Smithsonian Institution Archives*

*Donald Mennerich, New York University Libraries*

*Susan Thomas, Bodleian Library, Oxford University*

## NHPRC Advisory Board

*Jeremy Leighton John, Curator of eMANUSCRIPTS, The British Library*

*Monica Lam, Professor, Computer Science Department, Stanford University*

*Phillip R. Malone, Professor of Law & Director, Juelsgaard Intellectual Property and Innovation Clinic, Stanford University*

*Pam Maples, Innovation Director, John S. Knight Journalism Fellowships, Stanford University*

*Meg McAleer, Senior Archives Specialist, Manuscripts, Library of Congress*

*Chris Prom, Assistant University Archivist & Associate Professor of Library Administration University of Illinois at Urbana-Champaign*

*Ben Shneiderman, Distinguished University Professor, University of Maryland*

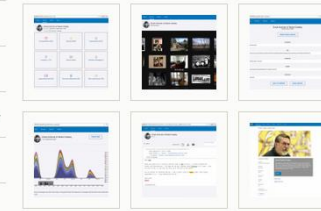
*Jeff Ubois, Program Officer, MacArthur Foundation*

# ePADD Phase II – 2015-2018



## ePADD

- ePADD + ePADD is a software package developed by Stanford University's Special Collections & University Archives that supports archival processes around the appraisal, ingest, processing, discovery, and delivery of email archives.
- About + Visit the [Discovery Module](#) for Stanford University's Special Collections & University Archives to see ePADD in action.
- Download
- Documentation
- Community +
- Advisory Board
- Presentations & Publications
- In the News



Tweets by @e\_padd

ePADD @e\_padd  
Replying to @brookeclift  
@brookeclift Glad you could make it!  
Mar 28, 2018

ePADD  
Embed [View on Twitter](#)



[HTTPS://LIBRARY.STANFORD.EDU/PROJECTS/EPADD](https://library.stanford.edu/projects/epadd)





ePADD / epadd

Watch 9 Star 32 Fork 6

Code Issues 34 Pull requests 1 Projects 1 Insights

Releases Tags

Latest release

v5.0  
0e7ae85

# ePADD 5.0

joshschneider released this on Mar 1 · 2 commits to master since this release

## Assets

epadd-discovery-standalone.jar	98 MB
epadd-settings.zip	170 MB
epadd-standalone.jar	99.5 MB
epadd.dmg	162 MB
epadd.exe	99.7 MB
Source code (zip)	
Source code (tar.gz)	

[ePADD 5.0 user documentation](#)

Releases for the appraisal, processing, and delivery modules; and the stand-alone discovery module.

These files including the epadd-settings.zip file below, which has also been updated are required to run these modules.

More about installation can be found [here](#).

EPADD  
ON  
GITHUB



## EPADD - 4 MODULES



EPADD  
Appraisal



EPADD  
Processing



EPADD  
Discovery



EPADD  
Delivery



## Email of Governor Jeb Bush

Date Range: January 15, 1970 to January 9, 2011

Messages: 2198 incoming, 1134 outgoing



Correspondents (2560)



Person entities (2160)



Other entities (1068)



Folder view (2)



Image attachments (138)



Other attachments (343)



Lexicon search



Labels



Data report

### Jeb Bush, Email Series



#### Collection Details

Institution  
Unassigned

Repository  
Unassigned

Collection ID  
Unassigned

1 accession

#### About Jeb Bush

Unassigned

**Accession ID:** 2015-100

**Title:** Email from Governor Jeb Bush

**Date:** Aug 2015

#### Scope and contents

In August 2015, during his campaign, Bush released his email from jeb@jeb.org. Bush, who grew up in Houston, is the second son of former President George H. W. Bush and former First Lady Barbara Bush, and a younger brother of former

# APPRAISAL

# PROCESSING

[Browse](#)[Search](#)[Authorities](#)[Export](#)[Save](#)[Close](#)

## Email of Governor Jeb Bush

Date Range: January 15, 1970 to January 9, 2011

Messages: 2198 incoming, 1134 outgoing.



Correspondents (2560)



Person entities (21)



Folder view (2)



Image attachments



Lexicon search



Labels



Data report

### Collection Details

Institution  
Unassigned

Repository  
Unassigned

Collection ID  
Unassigned

1 accession

Date Range  
1970-01-15 to 2011-01-09

Messages: 3,332

Attachments: 481  
Images: 138  
Documents: 289  
Others: 54

[EDIT METADATA](#)[EDIT PHOTOS](#)[ADD ACCESSION](#)

### About Job Bush

Unassigned

**Accession ID:** 2015-100

**Title:** Email from Governor Jeb Bush

**Date:** Aug 2015

#### Scope and contents

In August 2015, during his campaign, Bush released his email from jeb@jeb.org. Bush, who grew up in Houston, is the second son of former President George H. W. Bush and former First Lady Barbara Bush, and a younger brother of former President George W. Bush. He graduated from Phillips Academy in Andover, Massachusetts, and attended the University of Texas, where he earned a degree in Latin American affairs. In 1980, he moved to Florida and pursued a career in real estate development, and in 1986 became Florida's Secretary of Commerce until 1988. At that time, he joined his father's successful campaign for the Presidency. Bush announced his presidential candidacy on June 15, 2015. He suspended his campaign on February 20, 2016, shortly after the South Carolina primary and endorsed Senator Ted Cruz on March 23, 2016. Bush later made headlines by joining a group of Republicans who opposed the GOP nominee for president, Donald Trump.

#### Rights and conditions

While Special Collections is the owner of the digital materials, permission to examine collection materials is not an authorization to publish. These materials are made available for use in research, teaching, and private study. Any transmission or reproduction beyond that allowed by fair use requires permission from the owners of rights, heir(s) or assigns.

#### Notes

This email archive consists of two months of Bush's emails released online in 2015. PII information has been removed.

[EDIT METADATA](#)

**Correspondents**

- [Kathleen M. ... \(675\)](#)
- [Jill. Bratina \(159\)](#)
- [Nina Oviedo \(157\)](#)
- [Brandi Langford \(148\)](#)
- [Pamella Dana \(117\)](#)

[More](#)**Direction**

- [Received \(521\)](#)
- [Sent \(156\)](#)

Date: January 31, 2003 7:54am

From: "Bratina, Jill" &lt;jill.bratina@...&gt;

To: "Oviedo, Nina" <oviedon@...>, Governor Bush <jeb@...(1)>, "Shanahan, Kathleen" <kathleen.shanahan@...>, "Bratina, Jill" <jill.bratina@...>

Cc: alan@..., "Hirst, Elizabeth" <elizabeth.hirst@...>, Chris Osterlund <osterluc@...>, "Medows, Rhonda M.D." <rhonda.medows@...>, "Sharpe, Bob" <bob.sharpe@...>, "Langford, Brandi" <brandi.langford@...>, "Randolph, Jill" <randolph.jill@...>, Alan Levine <alan.levine@...>

Subject: ..: .....-.. .. **Thompson** ....

ID: febf4ad0564bfc91f005ae1a745bb2330c17df6625ab9f1a1976e

... "" ..... .. .. .. .. **Thompson!** .....

**Medicaid Modernization Proposal**

..... .., ..  
 .... - ./.. ..m.

**Secretary Tommy Thompson .. .. Governors .. .. new**

Medicaid ..... states .. ..  
 .....

..... states .. ..  
 ..... \$..... Medicaid .. ..  
 ..... \$..... .. ..  
 .....

# DISCOVERY

EPADD.STANFORD.EDU

Welcome to ePADD.

ePADD is a platform that allows researchers to browse and search historical email archives.

Messages have been redacted to ensure the privacy of donors and other correspondents. Please contact the host repository if you would like to request access to full messages, including any attachments.



Robert Creeley  
 49,929 messages  
 10,573 attachments  
 Collection ID: M0662  
 Accession ID: MSS.2005-341



Harrison Studio  
 78,574 messages  
 25,314 attachments  
 Collection ID: M1797  
 Accession ID: MSS 2016-053/054



# DELIVERY

EPADD Delivery

Browse Search Save Close

Robert Creeley papers - email series M0662 Special Collections & University A

teaching (176)

Correspondents  
 english@list... (72)  
 Breakingnews... (26)  
 Barbara Bono (25)  
 Joseph M Conte (19)  
 Charles Bern... (14)  
 More

General Labels  
 Add to Cart (1)  
 Reviewed (1)  
 Chapter 2 (1)

Accessions  
 MSS 2005.341 (176)

Annotations  
 Not annotated (175)  
 Annotated (1)

Attachment type  
 doc (17)  
 vcf (6)  
 pdf (4)  
 none (4)

Labels: Add to Cart, Reviewed, Chapter 2

Interesting... I wonder if Lynda is aw

2002 5:36am  
 man  
 suny]  
 Teaching...  
 72cde2622149ac1196bd9901f10b42870cfab401e9c7b124dc05714 (Link)

Attached please find registration information about the 16th annual SUNY Council on Writing Conference, entitled Energizing Teaching, Writing, and the Teaching of Writing.

We hope you will join us for what promises to be a conference that lives up to its name.

Lynda Feldman,  
 Conference Coordinator  
 Assistant Professor of English  
 Jefferson Community College  
 Watertown, New York

### Collection Details

Institution  
Stanford University Libraries

Repository  
Manuscript

Collection ID  
M1797

Accession ID  
MSS 2016-053/054

Date Range  
2003-12-16 to 2016-04-13  
300 messages undated

### About Harrison Studio

The Harrison papers document the life and work of married couple Helen Mayer Harrison and Newton Harrison, leading pioneers of the eco-art movement, whose collaborative career began in the late sixties. Throughout their career, the Harrisons worked with biologists, ecologists, architects, urban planners and other artists, creating works that support biodiversity and community development.

#### Rights and Conditions

While Special Collections is the owner of the digital materials, permission to examine collection materials is not an authorization to publish. These materials are made available for use in research, teaching, and private study. Any transmission or reproduction beyond that allowed by fair use requires permission from the owners of rights, heir(s) or assigns.

#### Notes

Email in accessions 2016-053 and 2016-054 were captured from the

## Mbox files

Folder or file location

/Users/jschne/Desktop/2017 August desktop/eP/

**BROWSE**

Name of email source

Jeb 1

**+ ADD ANOTHER FOLDER**

**+ ADD ANOTHER PRIVATE IMAP EMAIL ACCOUNT**

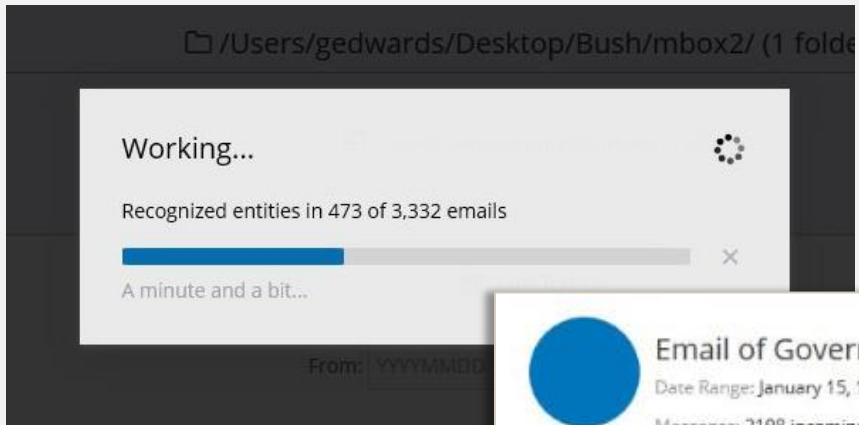
## Public Email Accounts (Gmail, Yahoo, Hotmail, Live.com, etc)

Email Address

Password

**+ ADD ANOTHER PUBLIC IMAP EMAIL ACCOUNT**

**INGEST**



### Email of Governor Jeb Bush

Date Range: January 15, 1970 to January 9, 2011  
Messages: 2198 incoming, 1134 outgoing.

 Correspondents (2560)	 Person entities (2160)	 Other entities (1068)
 Folder view (2)	 Image attachments (138)	 Other attachments (343)
 Lexicon search	 Labels	 Data report

# Correspondents – Name Resolution



## Email of Governor Jeb Bush

All Correspondents

[GO TO GRAPH VIEW](#)

[EDIT CORRESPONDENTS](#)

Show **10** entries

Search:

Name	Incoming messages	Outgoing messages	Mentions
<a href="#">Jeb Bush</a>	1134	0	2108
Kath	160	0	568
Brati	32	0	185
Lang	21	0	162
Eli Fe	25	0	134
Bran	24	0	121
Pam	78	0	126
Ham	0	0	113
Stutl	17	0	108
Ardu	10	0	103

- Honorable Jeb Bush
- Governor Bush
- Bush, Jeb
- Governor Jeb Bush
- jeb
- Jeb E Bush
- JEB
- JEb BUSH
- Gov-Jeb Bush
- Jeb
- Governor Jeb Bush
- Gov. Jeb Bush
- jeb bush
- Gov. Jeb/Miss Betty
- Gov.Jeb Bush
- Org
- Bush, Governor Jeb
- J E Bush
- Fl Governor
- Bush Gov. Jeb
- Jeb JohnEllis Bush
- bush,jeb
- Governor Jeb
- Bush, Governor
- JEB BUSH
- Bush, GOVERNOR JEB
- Gov. Bush
- My Florida
- Bush/jeb Bush/jeb
- hoffmana@gate.net
- jeb@jeb.org
- jeb@bush-brogan-2002
- jeb@myflorida.com
- jeb.bush@myflorida.com
- fl\_governor@eog.state.fl.us
- jebbush@myflorida.com

Showing

[Previous](#) [Next](#)

rowse?adv-search=1&contact 0085182458491ef0671e0f61240ffca8a7ec66e995d0199494e

# Edit Address Book

Sort order

Sort by email volume

topnote@aol.com

--

Charla Sasser

Sasser, Charla

charla.sasser@myflorida.com

--



## Email of Governor Jeb Bush

All Correspondents

 [GO TO GRAPH VIEW](#)

 [EDIT CORRESPONDENTS](#)

Kathleen Shanahan

Shanahan, Kathleen

Shanahan, Kathleen M.

Kathleen M. Shanahan

kathleen.shanahan@eog.state.fl.us

kathleen.shanahan@myflorida.com

shanahk@eog.state.fl.us

kathleen@jeb.org

bradshs@eog.state.fl.us

--

Langford, Brandi

Brandi Langford

brandi.langford@myflorida.com

langfob@eog.state.fl.us

--

Wainwright, Tara

Tara Wainwright

tara.wainwright@myflorida.com

wainwrt@eog.state.fl.us

--

# Labels - Actions



Jeb Bush paper - Email series

Label:

New label

Label name

25 Years from message date

Label type

RESTRICTION LABEL

Label description

Restrict 25 Years from the date of the message as per gift agreement.

Restriction type

YEARS FROM DATE OF MESSAGE

Restricted for (years)

25

UPDATE →

## Correspondents

Jeb Bush (1)  
Kathleen Sha... (1)  
Brian Yablonski (1)  
Stutler, Denver (1)  
Branker, Laura (1)

More

## Restriction Labels

25 Years fro... (1)

## Annotations

Annotated (1)

## Folders

01Jan.mbox (1)

LABELS ▾

25 Years from message date

This message reminds me of the time that Jill Bratina and I...

1/1



Restriction Labels

- Do not transfer
- 25 Years from message date

General Labels

- Review with donor
- Cleared For Release
- Review with supervisor
- Reviewed

...rodriguez@myflorida.com>  
...hleen" <kathleen.shanahan@myflorida.com>,  
...blonski@myflorida.com>, "Stutler, Denver" <denver.stutler@myflorida.com>,  
...nke@myflorida.com>  
...hirst@myflorida.com>,  
...yflorida.com>, "Muniz, Carlos" <carlos.muniz@myflorida.com>, daniel.woodring@fdoe.org  
lc6310767100c0a8c73be0bf2435e3a0221ee4d876 (Link)

...ome great news.

On January 3, [Judge Nikki Clark](#) denied the motion of the [Florida Public Employees Council 79, AFSCME](#) and [AFL- CIO](#) for a Temporary Injunction to preclude the [University Board of Trustees](#) from taking any action regarding personnel policies and collective bargaining procedures at the 12 state universities. Among the reasons for her order were that the plaintiffs had failed to show any injury that could not be remedied by monetary relief, if ultimately successful, and that the allegations regarding harm from potential promulgation of administrative rules was speculative and, if proven, could be remedied under administrative procedures. The judge also found no evidence of an emergency warranting an injunction.

# REGEX SEARCHES - PII

GO TO GRAPH VIEW

VIEW/EDIT LEXICON

+ CREATE NEW LEXICON

Choose Lexicon

General

- General
- Persona.academic.administrator.sensitive.duke
- Persona.author.princeton
- Persona.composer.nypl
- Persona.environmental.artist.projects.stanford
- Persona.faculty.uci
- Persona.journalist.activist.politics.and.travel.ucb
- Persona.microbiologist.uiuc
- Persona.writer.theater.nypl
- Regex**
- Sensitive
- Sentiments

Lexicon category

Family

Academics

Professional Activities

Publications

Award

Showing 1 to 5 of 5 entries

Messages

1528

648

579

487

97

U.S. social security number

[0-9]{3}- [0-9]{2}- [0-9]{4}

Credit card number

[0-9]{4}-. [0-9]{4}-. [0-9]{4}-. [0-9]{4}

TEST

[0-9]{4}

+ ADD A CATEGORY

SAVE LEXICON

have no control of him. He flips out if he doesnt get his way. His SSn is **123-45-6789**. Please try and slow him down before he kills himself or someone

GO TO GRAPH VIEW

VIEW/EDIT LEXICON

CREATE NEW LEXICON

### Choose Lexicon

- Sensitive
- General
- Persona.academic.administrator.sensitive.duke
- Persona.author.princeton
- Persona.composer.nypl
- Persona.environmental.artist.projects.stanford
- Persona.faculty.uci
- Persona.journalist.activist.politics.and.travel.ucb
- Persona.microbiologist.uiuc
- Persona.writer.theater.nypl
- Regex
- Sensitive**
- Sentiments

Search:

Messages ▾

Lexicon category	
Employment	639
Health	398
Legal	331
Personal	241
Student	70
Addictive pharmaceutical drug use	57
Personally Identifiable Information	32
Crime	0
Recreational and performance enhancing drug use	0

Showing 1 to 9 of 9 entries

# LEXICONS

# SENSITIVE LEXICON



Email of Governor Jeb Bush

Lexicon: sensitive

## Personally Identifiable Information (Test)

"social security" | ssn | "credit card" | "driver's license" | id | visa | "master card" | "american express" | passport | "bank account number" | "credit card number" | "discover card" | "medical id" | "bank of america" | CapitalOne | "Bank of the West" | "Wells Fargo" | "Credit Union" | DOB | "date of birth" | pcard | "procurement card"

## Employment (Test)

"performance appraisal" | "performance evaluation" | "performance review" | promotion | "annual review" | confidential | tenure | salary | recommendation | "reference letter" | grievance | fired | "let go" | terminated | demotion | layoff | "letter of support" | "search committee" | nomination | grievance | harassment | complaint | harass | "sexual harassment" | "sex discrimination" | "gender discrimination" | discrimination | concealment | toxicant | drunk | "unwarranted advances" | appointed | "promotion and tenure" | "appointment and promotion" | "tenure appeal" | "tenure denied" | "tenure denial" | "denied tenure" | "contract renewal" | compensation | stipend | salary | compensation | stipend | "background check" | "job offer" | "offer letter"

## Student (Test)

grade | "education record" | transcript | "student number" | "student id" | expel | probation | "academic probation" | cheat | "academic fraud" | plagiarize | "underage drinking" | underage | "underage drinking"

## Health (Test)

sick | ill | illness | sickness | medical | surgery | endoscopy | hospital | unwell | | depressed | injure | hurt | injury | injured | injurious | doctor | surgeon | surgical | clinic | le  
thal | suicide | laceration | trauma | traumatic | schizophrenic | disfigure | radiation | medicine | wound | foetus | fetus | fetal | injure | disease | infection | vomit | puke |  
puking | seasick | carsick | nausea | nauseous | nauseating | nauseated | pallid | wan | miscarriage | "heart  
attack" | postpartum | hemorrhage | fracture | casualty | concussion | biopsy | malignant | malignancy | pancreas | pancreatic | gastric | abdominal | thyroid | cervical |  
cardiovascular | colorectal | ovarian | gastrointestinal | lung | lungs | thoracic | oesophagus | alzheimer | parkinson | pediatrician | orthopedic | cardiologist | urologist  
| oncologist | gynecologist | dermatologist | neurologist | anesthesiologist | anesthetist | geriatric | "spinal cord" | "insurance policy" | hospital | doctor | "medical  
record" | prescription | medication | treatment | suicide | "heart bypass surgery" | mental | anorexia | drugs | abortion | "mental  
illness" | psychiatrist | dementia | std | sti | diagnosis | pregnant | meds | Medicare | cell | liver | spleen



Type: DISEASE

Show 10 entries

Search:

Entity	Score	Messages
Domestic Violence	1	2
Liver Disease	1	1
Substance Abuse	1	1
Multiple Sclerosis	1	1
Refractive Surgery	0.003	1
Endothelial Dysfunction	0.002	1
Hepatitis C Diagnosis	0.001	2

Showing 1 to 7 of 7 entries

Type: Government Agency

Show 10 entries

Search:

Entity	Score	Messages
Florida Department of Education	1	13
Centers for Medicare and Medicaid Services	1	12
Florida Department of Health	1	8
Florida Department of Management Services	1	5
Office of Management and Budget	1	4
United States Mint	1	4
National Science Foundation	1	3
United States Census Bureau	1	3
Bureau of Labor Statistics	1	3
National Park Service	1	3

Showing 1 to 10 of 33 entries

[Previous](#) [Next](#)

[EDIT ENTITIES](#)

OTHER “FINE-GRAINED” ENTITIES

## Advanced Search



# ADVANCED SEARCH

### Text

#### Terms

Search body  Search subject

### Entity

Brazil

Organizing Group

Tauzin

Mitzi Maggio

Zion Pfeifer

Jean Regazio

To  From  Cc  Bcc

### Miscellaneous

#### Time Range

To

#### Message Direction

Incoming

Outgoing

Either

#### Email Source

SELECT



#### Message Folder

#### Entity type

UNIVERSITY



#### Sort results by

SELECT



SEARCH →

Clear Form



# QUERY GENERATOR

Jeb Bush

From [Wikipedia](#), the free encyclopedia

Jeb Bush

Jeb Bush by [Gage Skidmore 2.jpg](#)

43rd Governor of [Florida](#)

In office

January 5, 1999 â January 2, 2007

Lieutenant Frank Brogan

[Toni Jennings](#)

Preceded by [Buddy MacKay](#)

Succeeded by [Charlie Crist](#)

Secretary of Commerce of [Florida](#)

In office

January 6, 1987 â September 9, 1988

Governor Bob [Martinez](#)

Preceded by [Wayne Mixson](#)

Succeeded by [Bill Sutton](#)

Personal details

Born [John Ellis Bush](#)

February 11, 1953 (age 65)

Midland, [Texas](#), [U.S.](#)

Political party Republican



## Email of Governor Jeb Bush

Search

Simple search

Query Generator

[Jeb Bush](#)

From [Wikipedia](#), the free encyclopedia

[Jeb Bush](#)

[Jeb Bush by Gage Skidmore 2.jpg](#)

43rd Governor of [Florida](#)

In office

January 5, 1999 – January 2, 2007

Lieutenant [Frank Brogan](#)

[Toni Jennings](#)

Preceded by [Buddy MacKay](#)

Succeeded by [Charlie Crist](#)

SEARCH →

Need more search options? Try [Advanced Search](#).

Messages matching [Charlie Crist](#)

Jan 30, 2003  
From: [sjameson@...](#) To: [jeb@...](#) (+9)  
Subject: Save the Coral Reefs

Jan 27, 2003  
From: [lplepage@...](#) To: [jeb@...](#) (+9)  
Subject: CORAL REEF SYSTEM IN FL

Jan 25, 2003  
From: [nitrox45@...](#) To: [jeb@...](#) (+9)  
Subject: Do not destroy our Reefs

Jan 24, 2003  
From: [lmcsh2001@...](#) To: [jeb@...](#) (+9)  
Subject: Protect Broward Co Coral Reefs

[VIEW ALL 15 MESSAGE\(S\)](#)

# IMAGE WALL

Filter images

Extension

JPG

JPG

PNG

GIF

BMP

File Size

CHOOSE

FILTER



And the people in AZ, discussing a bill to stop abuses by homeowners... serious this threat really is. Enjoy!

Warm regards

Jan Bergemann

President

Cyber Citizens For Justice, Inc.

<http://www.ccfj.net/>



# OTHER ATTACHMENTS

## Email of Governor Jeb Bush

343 Non-image attachments (282 unique)

### Filter attachments

Type

DOCUMENT (DOC;DOCX;PAGES), PRESENTATION (PPT;PPTX)

File Size

CHOOSE FILE SIZE

Time Range

YYYY - MM - DD

To

YYYY - MM - DD

**FILTER**

Show 10 entries

Search:

Subject	Date	Size	Attachment name
SETLEMENT OF \$1631	19 May 2002	68 KB	cgate[1].doc
SUPPORT COORDINATOR COMPLAINT	20 August 2002	15 KB	CARLA DD.wps
DISTRICT 14 INCOMPETENCE	15 October 2002	16 KB	DD HEARING 8-02.wps
Bradenton Herald 01-01-2003 Manatee doctors forced out	1 January 2003	0 KB	Bradenton Herald 01-01-2003 Manatee doctors f...

May 14, 2002

**Ms. Cyndi Grate**

P. O. Box 281  
Nichols, Florida 33863

Dear Ms. Grate:

Thank you for your letter dated May 3, 2002 with your explanation of funds spent for bathroom modification. In your letter, you state that Frank Murillo can confirm the money you spent on supplies at Home Depot. Upon speaking with Frank Murillo on May 14, 2002, he advised that he never saw your receipts from Home Depot; nor does he have a copy so he is not able to confirm these funds spent as you state. He also advised that he refunded \$200.00 to you because of your unhappiness with the bathroom cabinet and also re-did the bathroom cabinet three(3) times to attempt to please you. This \$200.00 needs to be returned to the Department.

In your letter you state that Adam's services were cut off while matters were being settled. This is not accurate. His services have never been cut off.

As was previously discussed in the letter from Carl Littlefield, reimbursement for the conference was not approved by District Administration due to your failure to return receipts in a timely manner.

Your immediate attention to this letter will be greatly appreciated.

Sincerely,

Brenda Bryan, HSPS  
Developmental Disabilities Program Office

cc: Jack Farley, Chief Legal Counsel

# ASSIGNING AUTHORITIES

Date: January 6, 2003 8:15am

From: "Rodriguez, Raquel" <raquel.rodriguez@myflorida.com>

To: jeb@jeb.org, "Shanahan, Kathleen" <kathleen.shanahan@myflorida.com>  
 "Yablonski, Brian" <brian.yablonski@myflorida.com>, "Stutler, Denver" <  
 "Branker, Laura" <laura.branker@myflorida.com>

Cc: "Hirst, Elizabeth" <elizabeth.hirst@myflorida.com>,  
 "Bratina, Jill" <jill.bratina@myflorida.com>, "Muniz, Carlos" <carlos.muniz@myflorida.com>

Subject: **DOE Success**

ID: 1088e9311e5e385b752a54dc6310767100c0a8c73be0bf2435e3a0221ee4

David Griffin

18

+ Assign an authority

Griffin, David Ray (1939-)

✓ FAST ✓ VIAF ✓ Wikipedia: David\_Ray\_Griffin ✓ LCNAF

Griffin, David

✓ FAST ✓ LCNAF

Griffin, David E.

✓ FAST ✓ VIAF ✓ LCNAF

No authority record

Not logged in Talk Contributions Create account Log in

Read Edit View history Search Wikipedia



WIKIPEDIA  
The Free Encyclopedia

- Main page
- Contents
- Featured content
- Current events
- Random article
- Donate to Wikipedia
- Wikipedia store

Interaction

- Help
- About Wikipedia
- Community portal
- Recent changes
- Contact page

Tools

- What links here
- Related changes
- Upload file
- Special pages
- Permanent link
- Page information
- Wikidata item
- Cite this page

- Print/export
- Create a book
- Download as PDF

Article Talk

## David Ray Griffin

From Wikipedia, the free encyclopedia

*For other people named David Griffin, see David Griffin (disambiguation).*

**David Ray Griffin** (Wilbur, Washington, born August 8, 1939)<sup>[1]</sup> is a retired American professor of [philosophy of religion](#) and [theology](#), and a political writer. Along with [John B. Cobb, Jr.](#), he founded the [Center for Process Studies](#) in 1973, a research center of [Claremont School of Theology](#) which seeks to promote the common good by means of the relational approach found in [process thought](#).<sup>[2]</sup> Griffin has published a number of books on the subject of the [September 11 attacks](#), suggesting that there was a [conspiracy](#) involving some elements of the [United States government](#).<sup>[3]</sup>

### Contents [hide]

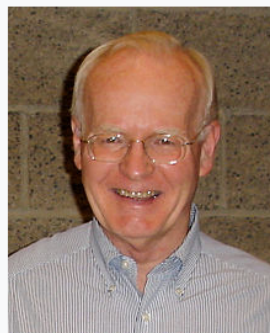
- Life and professional career
- Statements and publications on the September 11 attacks
- Books
  - About philosophy, theology, and religion
  - About the September 11 attacks
  - About the work of David Ray Griffin
- References
- External links
  - Affiliations

### Life and professional career [ edit ]

David Ray Griffin is a longtime resident of [Santa Barbara, California](#) and was a full-time academic from 1973 until April 2004. He is currently a co-director of the Center for Process Studies and is one of the foremost contemporary exponents of [process theology](#), founded on the [process philosophy](#) of [Alfred North Whitehead](#) and [Charles Hartshorne](#).

Griffin grew up in a small town in [Oregon](#), where he was an active participant in his [Disciples of Christ](#) church. After deciding to become a minister, Griffin entered

**David Ray Griffin**



<b>Born</b>	August 8, 1939 (age 78)
<b>Era</b>	20th-century philosophy
<b>Region</b>	Western philosophy
<b>School</b>	Process theology
<b>Main interests</b>	Ontology, epistemology, theology
<b>Influences</b>	<span>[show]</span>

[Daniel Woodring](#) called this morning with some great news.

On January 3, [Judge Nikki Clark](#) denied the motion of the Florida Public Employees Council 79, AFSCME and AFL- CIO for a Temporary Injunction to preclude the University Board of Trustees from taking any action regarding personnel policies and collective bargaining procedures at the 12 state universities. Among the reasons for her order were that the plaintiffs had failed to show any injury that could not be remedied by monetary relief, if ultimately successful, and that the allegations regarding harm from potential promulgation of administrative rules was speculative and, if proven, could be remedied under administrative procedures. The judge also found no evidence of an emergency warranting an injunction.

Although review by the 1st DCA technically would be feasible, it is rare for an appellate court to reverse the denial of a motion for a temporary injunction. If they chose to appeal, Plaintiffs would have 30 days from rendition of the order to file their notice.

[Daniel](#) also advises that the judge will not hold any further hearings on any pending motions (including the motion to dismiss the case) until sometime in February.

- Daniel Woodring
- Daniel
- Melinda McDaniel
- Daniel Uhlfelder
- Daniel Mytens

Congratulations to [Daniel](#)

Rocky



## Robert Creeley papers - Email Series

Export archive

### Export messages and attachments

Export to next ePADD module

BROWSE

EXPORT

EXPORT TO MBOX

### Export attachments

Unprocessed only

Type

Other extension

Specify location

BROWSE

EXPORT

# EXPORTING

- DISCOVERY
- DELIVERY
- ATTACHMENTS

Export headers (CSV)

Specify location

BROWSE

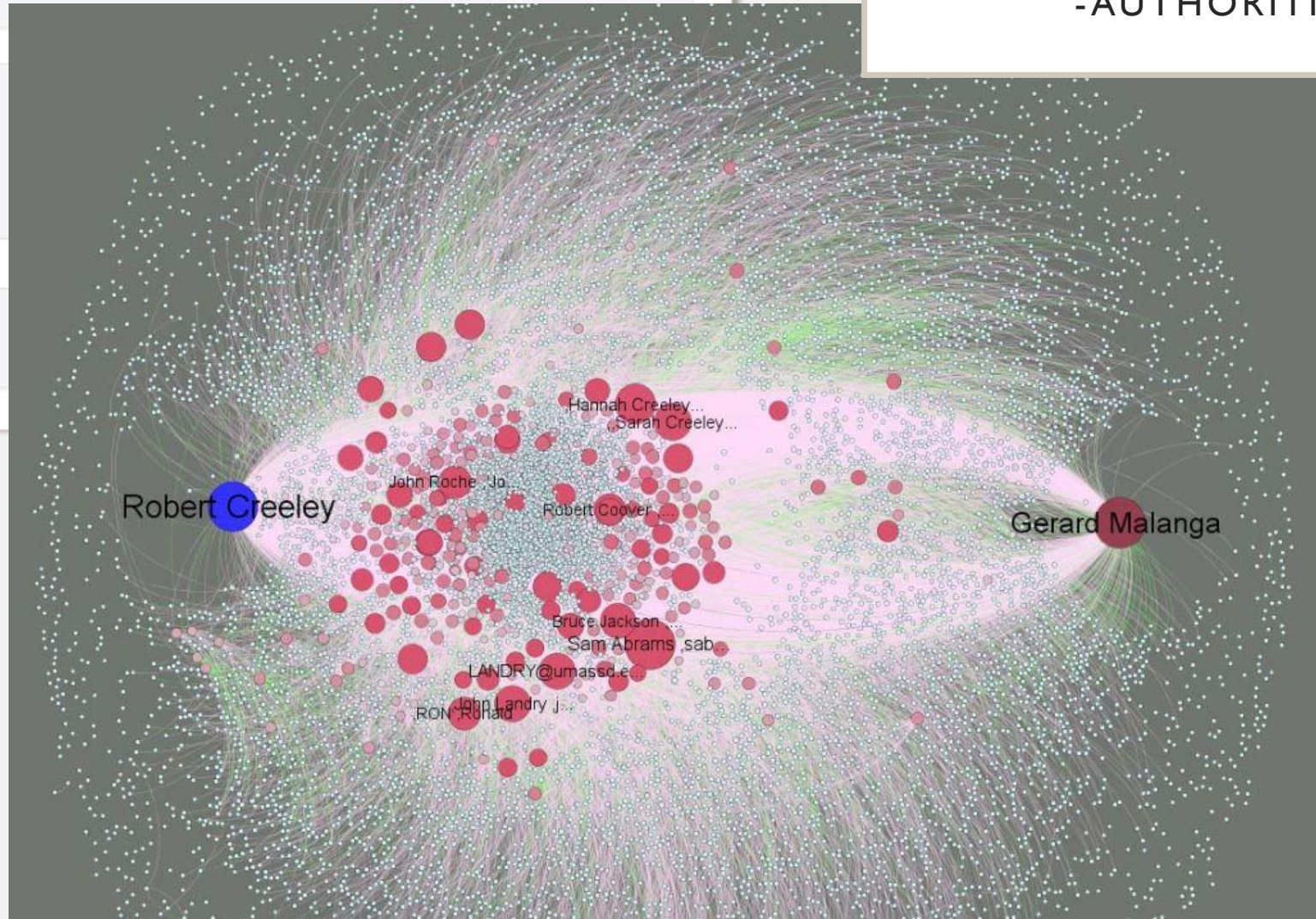
EXPORT

Export authorities (CSV)

Specify location

# EXPORTING

- HEADER INFORMATION
- AUTHORITIES





THE NEW YORK PUBLIC LIBRARY  
DIGITAL COLLECTIONS

archivematica



# INTEROPERABILITY

- PRESERVATION WORKFLOW
- PUBLICATION STRATEGIES

## PROJECT DIRECTOR



**Glynn Edwards**

Assistant Director,  
Department of Special Collections

Digital collections

Manuscripts and archives Rare books

## COMMUNITY MANAGER



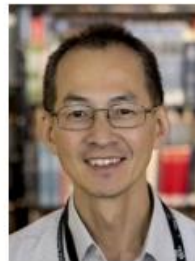
**Josh Schneider**

Assistant University Archivist

Manuscripts and archives

Stanford history

## PROJECT MANAGER



**Peter Chan**

Digital Archivist

Manuscripts and archives

## TECHNICAL ADVISOR



**Sudheendra Hangal**

Associate Professor of Practice in Computer Science  
Ashoka University  
sudheendra.hangal@ashoka.edu.in

## SOFTWARE ENGINEER



**Chinmay Narayanan**

Assistant Professor of Computer Science  
Ashoka University  
chinamy.narayan@ashoka.edu.in

# GROWING OUR USER COMMUNITY



British Library  
Brown University  
California Inst. of Technology  
Center for Jewish History  
Columbia University  
Duke University  
Emory University  
Fordham University  
Getty Research Institute  
Harvard University  
Hoover Institute

Indiana University - PUI  
Museum of Modern Art  
National Library of NZ  
New York Philharmonic  
New York Public Library  
New York University  
Princeton University  
Rockefeller Archive Center  
Royal Library of Copenhagen  
Smith College  
Stanford University

University of California, Berkeley  
University of California, Irvine  
University of California, Los Angeles  
University of Copenhagen, Denmark  
University of Illinois - UI  
University of Minnesota  
University of Southern California  
University of Texas at Austin  
University of Virginia  
Wildlife Conservation Society

**Outreach**-The University Archivist will be the primary promoter and representative of the archives to the University community and to external organizations and individuals. The archivist will collaborate with other staff to curate University history-centered exhibitions, and prepare University-history focused content for a variety of outlets including social media and websites.

**Public Service**-The University Archivist will have regular hours at the reference desk and will work alongside colleagues in assisting students, faculty, fellows, and scholars with the discovery of appropriate resources for their research needs. The archivist will serve as the primary contact for research inquiries pertaining to University history.

#### Qualifications, Required

- ALA- accredited MLIS/MIS in library and information science or advanced degree in a relevant discipline with applicable experience
- Minimum of four years of experience in an archival or special collections environment working directly with collections
- Experience in appraisal, processing, reference, and outreach activities
- Ability to work with born digital material and to preserve digital formats
- Excellent project management skills
- Outstanding interpersonal and collaborative skills
- Microsoft Office

#### Qualifications, Preferred

- Experience working with University Archives, web archiving, and digital repositories
- Supervisory experience
- Experience with instruction
- Archival certification
- Knowledge of Archivematica or similar digital archiving tool
- Knowledge of ePADD
- Knowledge of Aeon media system
- Knowledge of basic records management best practices
- Experience with ArchivesSpace (or Archon, Archivists Toolkit) and Aeon
- Experience with Archive-It or similar web archiving tool

**OUTREACH**  
-TEACHING CURRICULUM  
-JOB DESCRIPTIONS

Knowledge of ePADD!



## Jeb Bush - Email archives

Lexicon Hits

GO TO GRAPH VIEW

- General
- Persona.academic.administrator.sensitive.duke
- Persona.author.princeton
- Persona.composer.nypl
- Persona.environmental.artist.projects.stanford
- Persona.faculty.uci
- Persona.journalist.activist.politics.and.travel.ucb
- Persona.microbiologist.uiuc
- ✓ Persona.writer.theater.nypl**
- Sensitive
- Sentiments

NEW LEXICON

Search:

Lexicon category	Messages
Conception	772
Collaborators	589
Performances	391
management	173

Showing 1 to 4 of 4 entries



# LEXICON WORKING GROUP

## Welcome to ePADD.

ePADD is a platform that allows researchers to browse and search historical email archives.

Messages have been redacted to ensure the privacy of donors and other correspondents. Please contact the host repository if you would like to request access to full messages, including any attachments.



Robert Creeley  
49,929 messages  
10,573 attachments  
Collection ID: M0662  
Accession ID: MSS.2005-341



Harrison Studio  
78,574 messages  
25,314 attachments  
Collection ID: M1797  
Accession ID: MSS 2016-053/054

Search term: fuller

Institution: [Stanford University Libraries](#) Repository: [Manuscripts](#) Collection: [Robert Creeley papers](#)

Entity	Messages	Correspondent	Date Range
Buckminster Fuller	13		Jan 28, 2001 - Dec 16, 2004
Zack Fuller	2		May 17, 2004 - May 17, 2004
Margaret Fuller	2		Dec 02, 2003 - Dec 05, 2003
William Fuller	8		Feb 27, 2002 - Feb 22, 2005
Heather Fuller	7	✓	Oct 20, 1998 - Nov 02, 2004
Buckminster Fuller	3		Nov 28, 2001 - Jan 11, 2002
R. Buckminster Fuller	2		Dec 18, 2002 - Dec 19, 2002
Bucky Fuller	2		Jun 09, 2002 - May 02, 2003
diana fuller	1	✓	Jun 14, 2002 - Jun 14, 2002
Nov Heather Fuller	1		Aug 26, 2002 - Aug 26, 2002
Adele Fuller	1	✓	Apr 16, 2001 - Apr 16, 2001
Nicole Brossard & Heather Fuller	1		Jan 15, 1999 - Jan 15, 1999
stephanie fuller	1	✓	Dec 22, 2003 - Dec 22, 2003
Simon Fuller	1	✓	Dec 24, 2003 - Dec 24, 2003

Institution: [Stanford University Libraries](#) Repository: [Manuscript](#) Collection: [Harrison \(Helen and Newton\) papers](#)

Entity	Messages	Correspondent	Date Range
Buckminster Fuller Institute	319	✓	Oct 10, 2009 - Mar 23, 2016
THE BUCKMINSTER FULLER INSTITUTE	73	✓	Oct 10, 2009 - Mar 23, 2016
R. Buckminster Fuller	56		Dec 16, 2010 - Mar 23, 2016
Bucky Fuller	77		Nov 04, 2009 - Dec 14, 2015
Fuller Challenge	94		Jan 17, 2014 - Mar 23, 2016
Fuller Challenge Message-ID	1		Dec 07, 2015 - Dec 07, 2015
Fuller Prize	4		Jan 20, 2015 - Dec 07, 2015
Fuller Challenge Winner Bren Smith	3		Nov 25, 2015 - Mar 23, 2016
Buckminster Fuller	1069		Oct 10, 2009 - Apr 03, 2016
Fuller Challenge Conferring Ceremony	4		Jun 26, 2015 - Mar 23, 2016
FULLER CHALLENGE VIDEO RELEASED ONLINE	1		Nov 25, 2015 - Nov 25, 2015

# DISCOVERY

- CROSS-COLLECTION  
SEARCHING

101 Criteria to Evaluate Email Archival Software!

Peter Chan, ePADD Project Manager

FUTURE DIRECTIONS

Categories	Notes
A. Transfer of Emails to Institutions	There are different ways to transfer emails to institutions. Institutions need to decide on their strategy before they start.
B. Normalization of email files to MBOX or EML or XML (compliant with EXAS schema)	Emails comes in many file formats and can follow many protocols. We need to normalize them for appraisal, processing and/or long term preservation.
C. Attachments / Embedded links	Email messages can include attachments and embedded links. The inability to read these files or links means you are missing some information.
D. Detection and Management of Irregular Email Messages	Email messages might be missing headers or be otherwise malformed. This is especially true for older email messages. Users may need to be educated about the extent of these issues.
E. Identification and Handling of Sensitive Information	Better screening of sensitive messages may encourage more people to donate their email archives. Processing email archives likewise requires tools for screening of sensitive messages.
F. Information Retrieval Functions	Multiple search strategies provide users multiple means to find information.
G. Classification / Grouping of Contents	Search is no use if users do not know what to search. Classifying messages into different

H. Label / Annotation Functions	groups allow users to browse the archives according to the classification. Users can organize messages using their own terms.
I. Providing Access to of Email Archives Online and in a Reading Room	Users will benefit if more information about email archives is available online, so that they can do initial research before visiting a collecting institution. Likewise users will benefit from additional support when conducting research on email in a reading room.
J. Integrate with Digital Preservation Repositories	Email archival systems are not preservation repositories. They should support integration with properly managed digital preservation systems.
K. Interoperability	Institutions have many different systems which may benefit from sharing common data with the email archival system. Successful sharing of data may align business functions and help users discover more information about the email collection.

A. Transfer of Emails to Institutions

Batch / Real Time	Notes
1. Connect to IMAP server and save messages as mbox or eml files	ePADD, MailStore Server, Aid4Mail, Thunderbird
2. Connect to POP3 server and save messages as mbox or eml files	MailStore Server
3. Connect to MAPI server and save messages as mbox or eml files	MailStore Server, Aid4Mail
4. Connect to SMTP server and save messages as mbox or eml files	Aid4Mail
5. Connect to other email servers and save messages as mbox or eml files	



## Special Collections & University Archives

HOURS & ACCESS LIBRARY WEBSITE

Today: 9am - 5pm  
(650) 725-1022  
specialcollections@stanford.edu



Home » Libraries » Special Collections » Archiving email

## Archiving email

Special Collections & University Archives +

Using our collections +

FAQ

Rare Books Division +

Manuscripts Division +

University Archives

About the Archives +

Collections

Access and use +

### Using ePADD to screen and transfer your email to the Stanford University Archives

**What is ePADD?** ePADD is software that enables you to efficiently screen your email for private information, and transfer it to the Archives, so it can be preserved and support teaching, learning, and research at Stanford and beyond.

ePADD allows you to share only the email you select with the Archives. It can also help you identify and set access restrictions if necessary. If you are unable to carry out this work yourself, ePADD also enables us to easily restrict access to materials according to criteria you define.

ePADD was developed by computer scientists and archivists at Stanford, in collaboration with donors, archivists, and scholarly researchers.

**Why Use ePADD?** Like handwritten correspondence before it, email represents the lifeblood of historical scholarship. Email offers singular insight into and evidence of self-expression, collaboration, networks, and transactions.

#### MANAGING MATERIALS

[Naming files](#)

[Organizing files](#)

[Managing email](#)

[Stanford Digital Repository](#)

[Audio/video](#)

#### TRANSFERRING MATERIALS

[Faculty](#)

[University staff](#)

[Students, alumni/ae, and families](#)

# INFORMATION FOR DONORS

<https://library.stanford.edu/spc/university-archives/transferring-your-records/archiving-email>

**FAST (Faceted Application of Subject Terminology)**

 **ORCID**  
Connecting Research  
and Researchers

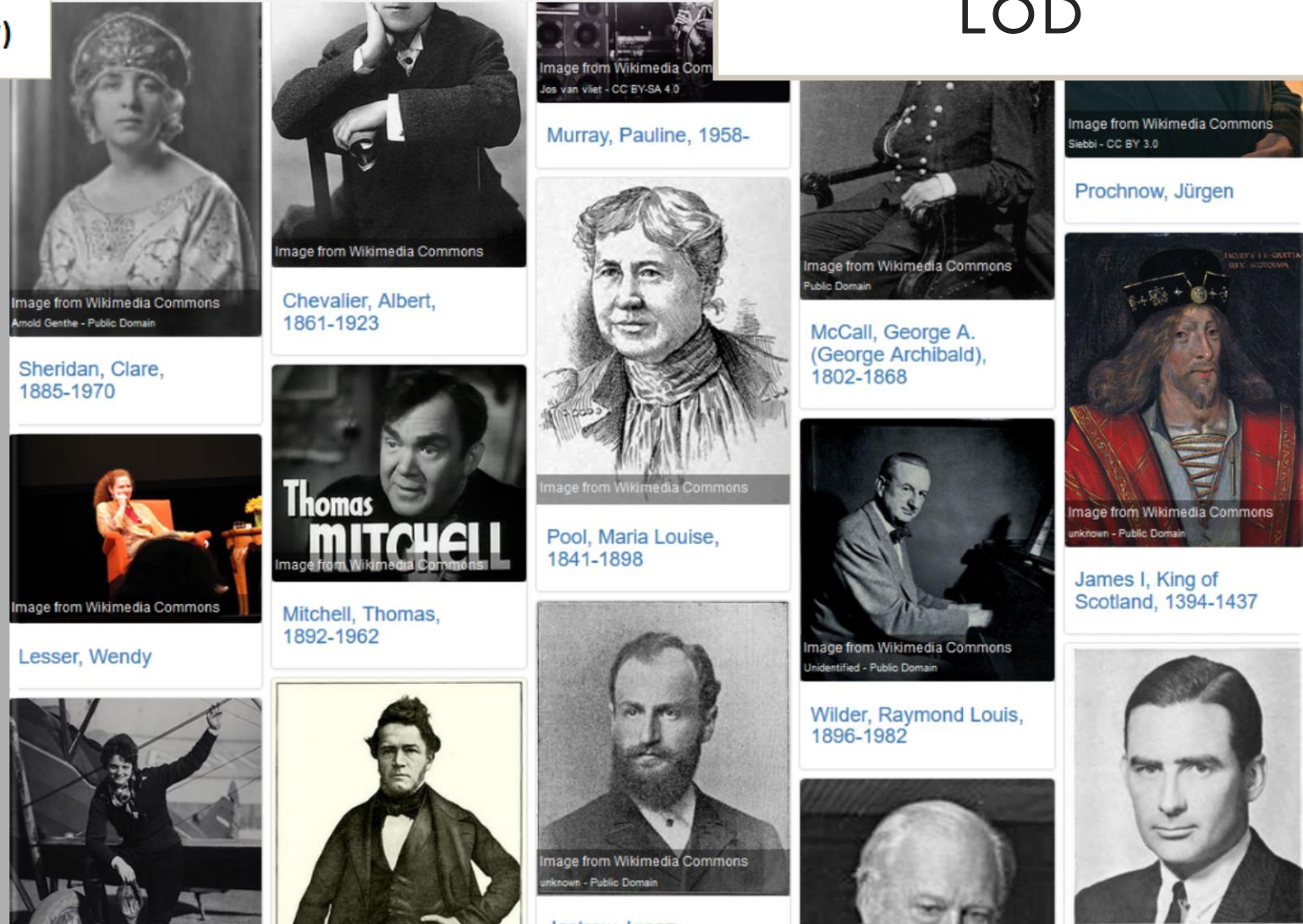
 **isni**

**snac** Search

**Social Networks and Archival Context**

**FUTURE  
DIRECTIONS:**

**LOD**



A grid of 15 portrait cards, each featuring a black and white photograph of a historical figure. Each card includes the name and dates of the individual, along with a small caption indicating the image source (e.g., 'Image from Wikimedia Commons').

- Murray, Pauline, 1958-**
- Chevalier, Albert, 1861-1923**
- Sheridan, Clare, 1885-1970**
- Lesser, Wendy**
- Thomas MITCHELL, 1892-1962**
- Mitchell, Thomas, 1892-1962**
- Pool, Maria Louise, 1841-1898**
- Wilder, Raymond Louis, 1896-1982**
- Prochnow, Jürgen**
- McCall, George A. (George Archibald), 1802-1868**
- James I, King of Scotland, 1394-1437**



Visit [library.stanford.edu/projects/epadd](https://library.stanford.edu/projects/epadd)

Follow [@e\\_padd](https://twitter.com/e_padd)

Watch [youtu.be/vu1Oi8TiGiU](https://youtu.be/vu1Oi8TiGiU)

Receive [epadd\\_list@stanford.lists.edu](mailto:epadd_list@stanford.lists.edu)

Download / Contribute [github.com/epadd](https://github.com/epadd)

Participate [epadd.nimeyo.com](https://epadd.nimeyo.com)

Reach [epadd\\_project@stanford.edu](mailto:epadd_project@stanford.edu)