

PROQUEST DISSERTATION DASHBOARD CNI, DECEMBER 2013 AUSTIN MCLEAN, PROQUEST



What's Measured in Dissertation Dashboard?

- **Usage** (includes citations, PDF views, page preview views, etc.)
- **Global Accesses** (usage data as defined above by geographical regions)
- **Number of deposits made to ProQuest** (productivity)



What questions could I answer about my institution's scholarly output with dissertation data?

- How often are my institution's dissertations accessed and viewed in the academic community? By my peers? Globally?
- How does my institution's dissertation usage compare to that of my peers?
- What do the patterns of usage reveal about the possible value of my institution's scholarly output to the academic community?



What do the patterns of usage reveal about the value of my institution's scholarly output?



- Over time?
- Compared to my institution's peers?
- What might high usage rates signal to key audiences?



What kind of information is potentially available in the Dissertation Dashboard?

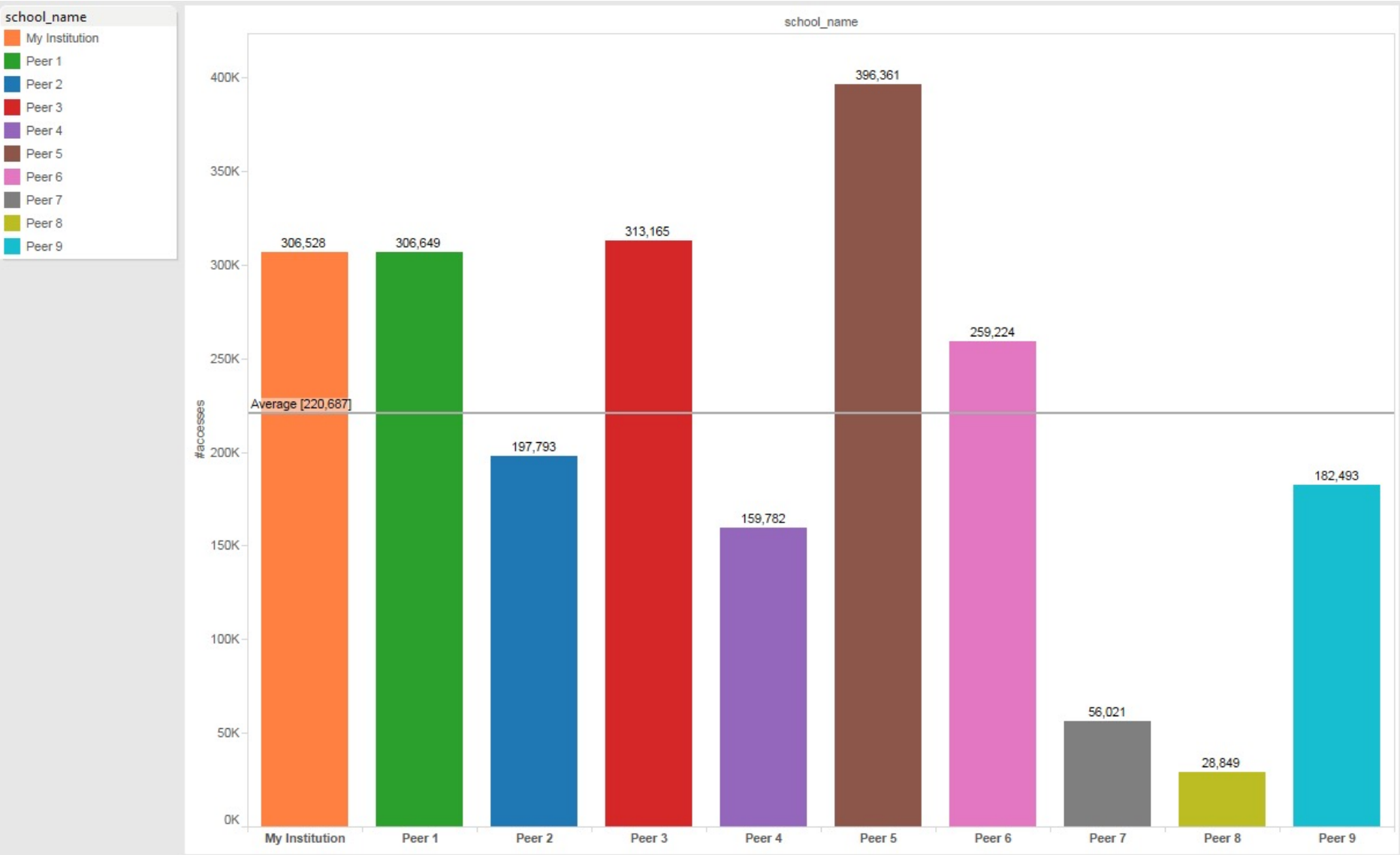
- Title
- Author
- Committee Members (recent years)
- Advisor (recent years)
- Institution
- Degree Date
- Subject categories
- Narrowly defined subject categories
- Document format
- Country of access
- Identity of PQDT customer (e.g., Cardiff University, UK)



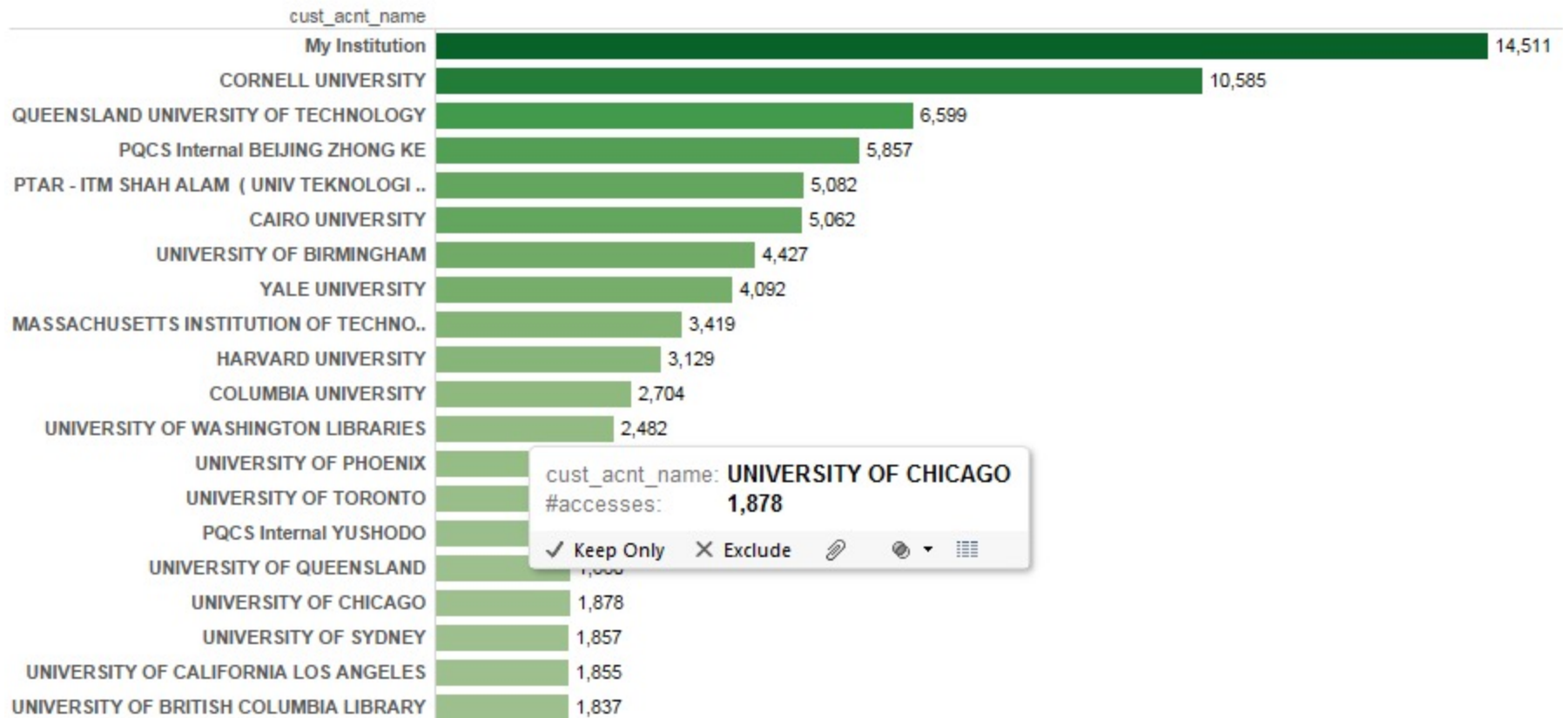
Examples of Reports Generated



What was the overall usage number for my institution's dissertations in 2012? How does my institution's usage compare to that of our peers? How do we compare to the group average?



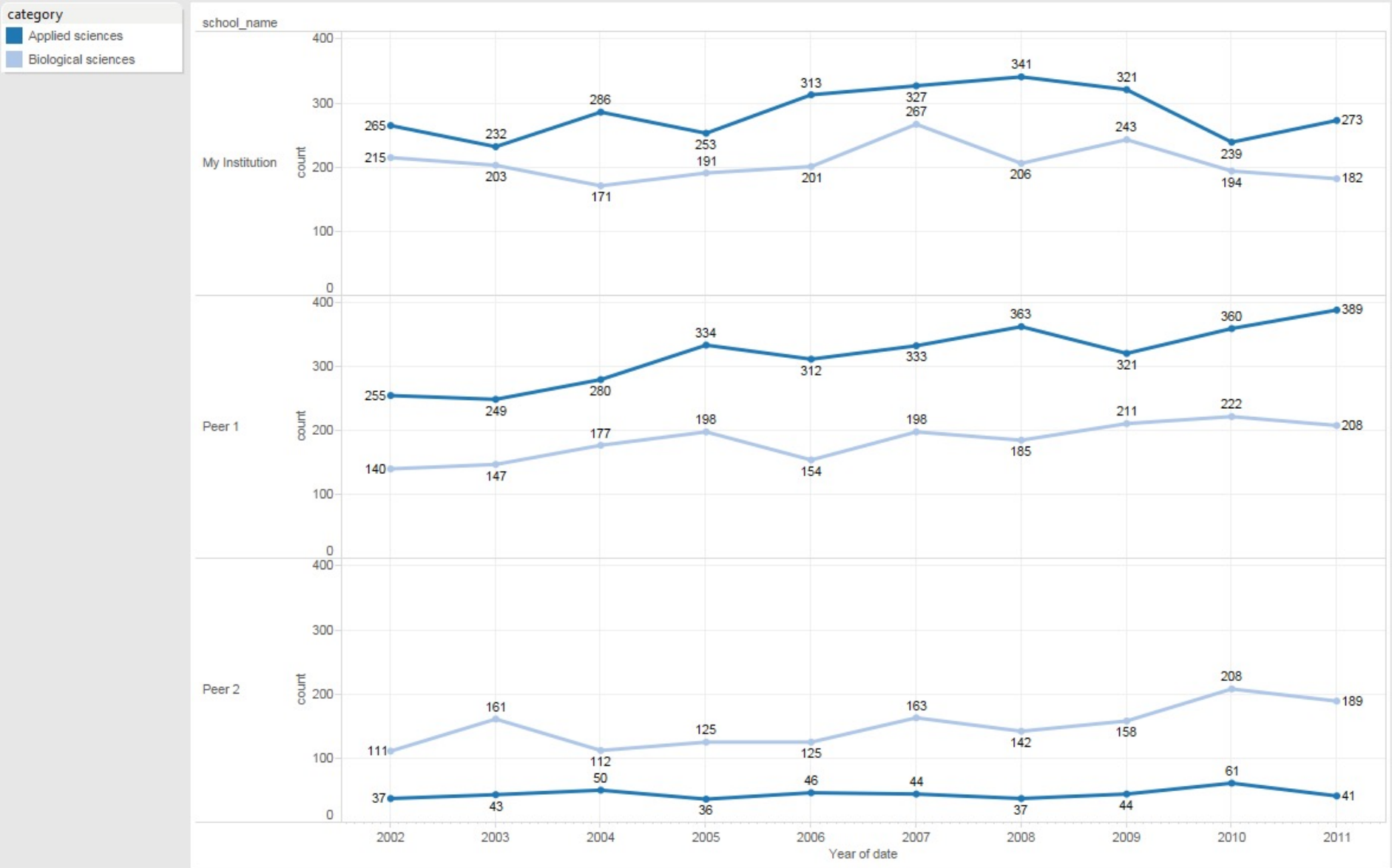
Which ProQuest customers are accessing the dissertations produced by my school?



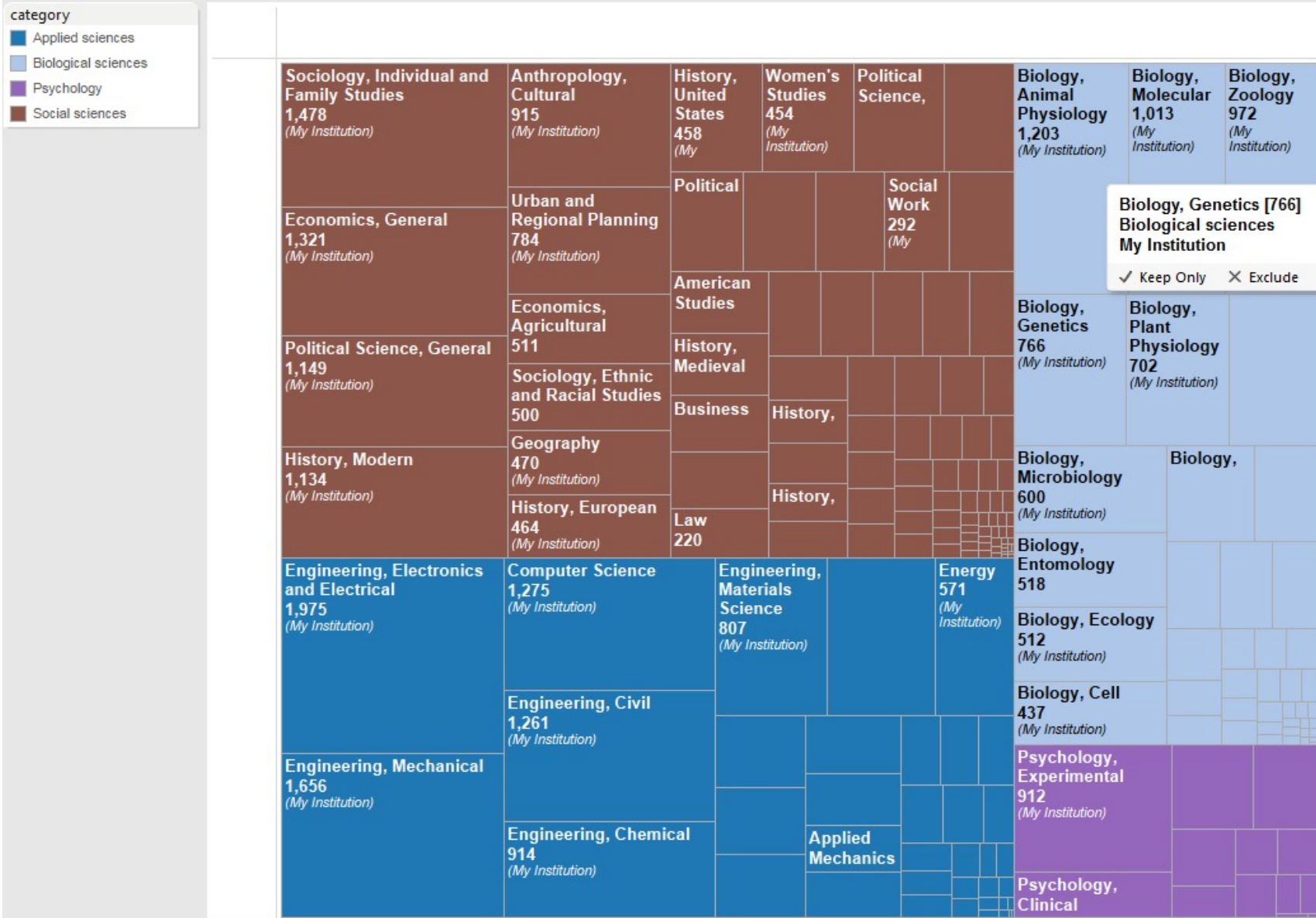
What is my institution's usage by geographic regions?



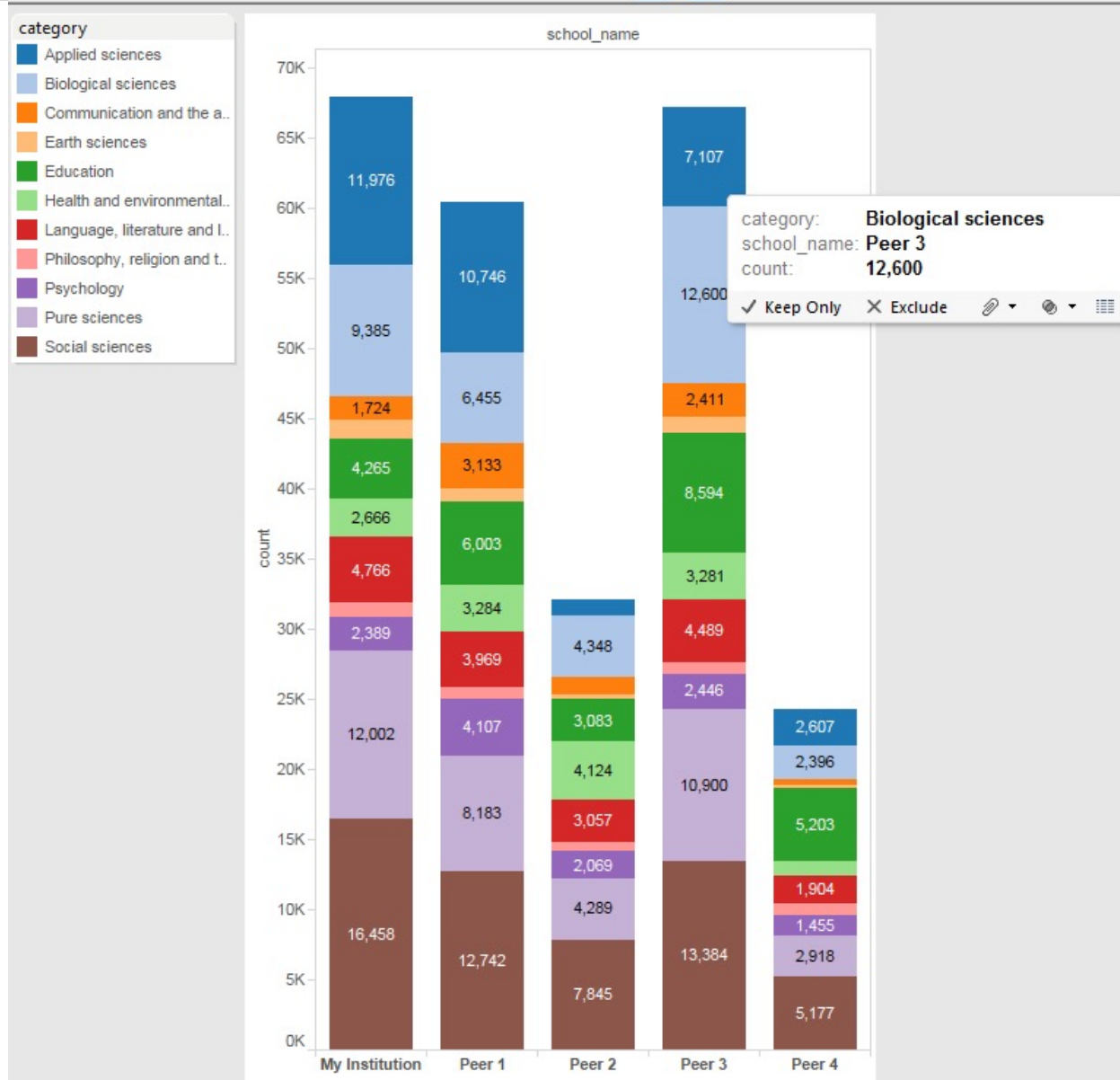
What do my institution's deposit/productivity patterns look like for particular subject categories from 2002 to 2011? How do we compare to Peer 1's and Peer 2's?



What is my institution's dissertation production by broad ProQuest subject categories and narrowly defined categories?



Dissertation deposits/production across all 11 ProQuest subject categories for my institution and that of 4 peers.



Report 6 - Deposits/productivity