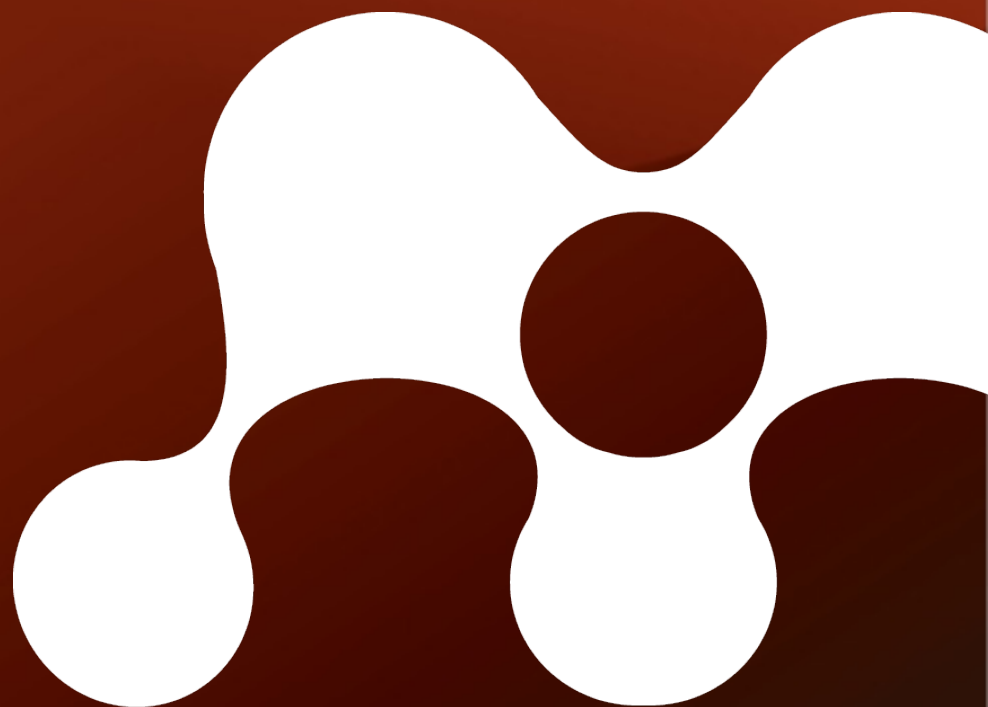
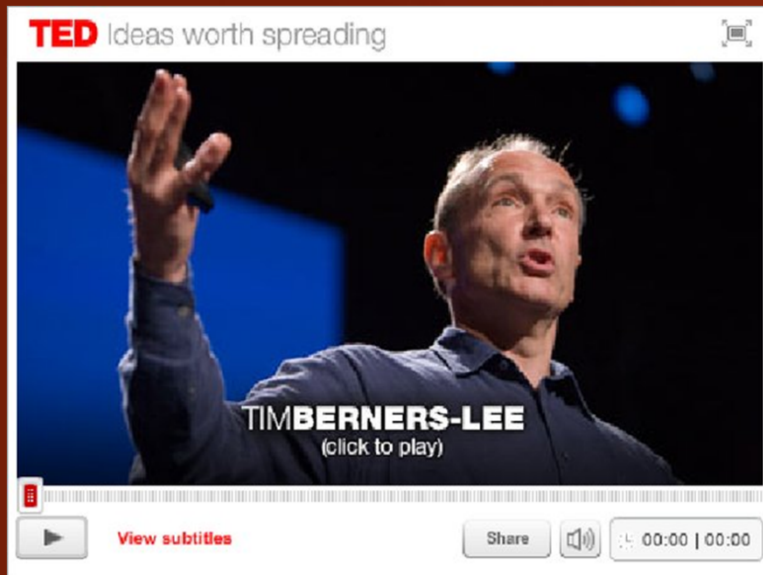


Connecting researchers with information - and unlocking it!

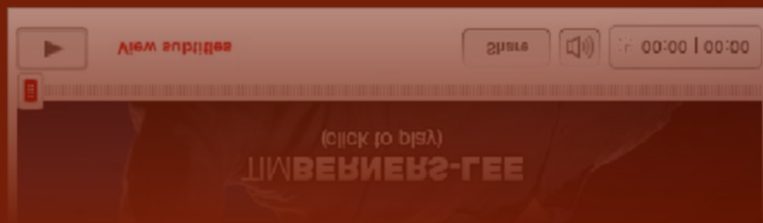
Mendeley and Open Science

William Gunn
Head of Academic Outreach
william.gunn@mendeley.com





“The state of knowledge of the human race is sitting in the scientists’ computers, and is currently not shared [...] We need to get it unlocked so we can tackle those huge problems.”



Connecting Scholars in the Cloud

- Research is a social activity, but the tools and the data aren't.
- Databases have incomplete metadata, incompatible licenses prevent remixing and sharing necessary for new insights.
- Capture the latent info in their process!

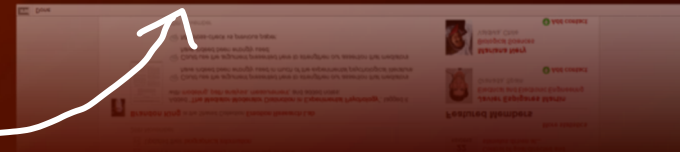
Mendeley makes science more collaborative and transparent:

...and aggregates research data in the cloud

Install Mendeley Desktop



Mendeley extracts research data...



What is Mendeley?

- Mendeley Web: A research catalog of 80M documents from 1M researchers, 80K collaborative groups.
- Mendeley Desktop: A bit of software that organizes PDFs and helps you write papers.

Based in London & New York Mendeley are researchers,
graduates and software developers from...



...backed by co-founders and
former executives of:



Supported by:



Most read articles

Overall

1,339 READERS	Why most published research findings are false: author's reply to Goodman and Greenland. John P A Ioannidis (2007) <i>PLoS Medicine</i>
742 READERS	Error bars in experimental biology. Geoff Cumming, Fiona Fidler, David L Vaux (2007) <i>The Journal of Cell Biology</i>
647 READERS	How to choose a good scientific problem. Uri Alon (2009) <i>Molecular Cell</i>
475 READERS	The mathematical theory of communication. 1963. C E Shannon (1948) <i>MD computing computers in medical practice</i>
340 READERS	Building Theories from Case Study Research Kathleen M Eisenhardt (1989) <i>Academy of Management Review</i>

In Psychology

143 READERS	What we can do and what we cannot do with fMRI. Nikos K Logothetis (2008) <i>Nature</i>
124 READERS	Why most published research findings are false: author's reply to Goodman and Greenland. John P A Ioannidis (2007) <i>PLoS Medicine</i>
96 READERS	The moderator-mediator variable distinction in social psychological research: conceptual, strategic, and statistical considerations. R M I <i>Journ Psych</i>
74 READERS	World and I Alan <i>Natu</i>
65 READERS	The I Giac Craig <i>Anni</i>

Aggregate data enables social discovery in real time

Most frequently used tags in Psychology

review
Genetics
control
attention
RESEARCH
Memory
cognition
humans
Education
meta-analysis

5-11 May 2010

review
Religion
FMRI
learning
model
language
anxiety
Relationships
smoking
US

12-18 May 2010

Attention
emotion
model
representation
Mirror Neurons
fMRI
Anxiety
working memory
perception
gesture

19-25 May 2010

Academy of Management Review
Kathleen M Eisenhardt (1989)
Building Theories from Case

340

medical practice
MD computing computers in
C E Shannon (1948)
communication. 1963.
The mathematical theory of

475

Molecular Cell
Uri Alon (2009)
problem.
How to choose a good scientific

647

What we can do and what we cannot do with fMRI.
Nikos K Logothetis (2008)
Nature

143

Nature Reviews Neuroscience
Why most published research findings are false: author's reply to Goodman and Greenland.
John P A Ioannidis (2007)
PLoS Medicine

124

Psychology
The moderator-mediator variable distinction in social psychological research: conceptual, strategic, and statistical considerations.
R M I
Journ Psych

96

analysis
meta-analysis
Education
humans
cognition
Memory
RESEARCH

smoking
Relationships
anxiety
language
model
learning
FMRI
Religion
review

perception
working memory
Anxiety
fMRI
representation
emotion
Attention

Browse Papers ▼

Browse Collections

Search research papers

Search for papers

Advanced Search

EXPERIMENTAL PSYCHOLOGY (PSYCHOLOGY)

Puzzlingly High Correlations in fMRI and Social Cognition

Edward Vul, Christine Harris, Piotr Winkielm

Perspectives on Psychological Science (2009)

Volume: 4, Issue: 3, Publisher: Blackwell Publishing, Pages: 1-16
ISSN: 17456916

DOI: 10.1111/j.1745-6924.2009.01125.x

Available from pps.sagepub.com

Tags

behavioural commentary fmri methods review statistics

Abstract

In their article, Vul, Harris, Winkielman, and Pashler (2009), this nonindependent analysis in behavioral neuroimaging, where a result of spurious statistical procedures. In this comment, I note that the phenomenon in question is a type of selection bias and hence is neither new nor unique to fMRI. The use of massive, complex data sets (common in modern applications) to answer increasingly intricate scientific questions presents many potential pitfalls to valid statistical analysis. Strong collaboration between statisticians and scientists and the development of statistical methods specific to the types of data encountered in practice can help researchers avoid these pitfalls.

Readership Statistics

72 Readers on Mendeley

by Discipline

56% Psychology

15% Medicine

14% Biological Sciences

by Academic Status

40% Ph.D. Student

13% Post Doc

10% Researcher (at an Academic Institution)

by Country

42% United States

15% Germany

14% United Kingdom

14% United Kingdom

Like

Add to My Library

Share This

Academic Institution)

Related Research

Reply to Comments on "Puzzlingly High Correlations in fMRI Studies of Emotion, Personality, and Social Cognition"

E Vul, C Harris, P Winkielman, et al. (2009)

Perspectives on Psychological Science

More like this Add to library 14 Readers Dup

Multivariable prognostic models: issues in developing models, evaluating assumptions and adequacy, and measuring and reducing errors

Frank E Harrell, K L Lee, D B Mark (1996)

Statistics in Medicine

More like this Add to library 6 Readers Dup

Correlation of Electroms in a Narrow s Band

Martin C. Gutzwiller (1965)

Physical Review

More like this Add to library 1 Reader Dup

More like this Add to library 1 Reader Dup

Physical Review

Martin C. Gutzwiller (1965)

Correlation of Electroms in a Narrow s Band

More like this Add to library 1 Reader Dup

Statistics in Medicine

Frank E Harrell, K L Lee, D B Mark (1996)

Article statistics provide specific readership information & recommend related papers

Apps are being developed that mash up Mendeley data with:

The New York Times

Mendeley Throws Open the Doors to Academic Data

By CURT HOPKINS of  ReadWriteWeb
Published: April 29, 2010

Innovations in communications software and websites can be quite exciting. After the dust dies down, however, it's really not clear how much more information has been made available, how much more people can communicate, how much more thinking has been enabled.

More News From ReadWriteWeb

- Facebook Open Graph: The Definitive Guide For Publishers, Users and Competitors
- Top 10 Mobile Trends of 2010, Part 3: Emerging Markets
- How to Delete Facebook Applications (and Why You Should)
- Top 10 Mobile Trends of 2010, Part 2: Apps, Apps,

London-based Mendeley's offering up an Open API and making a vast catalog of academic publications searchable, well, that might make the cut.

Mendeley is a popular academic and scientific research cross-platform management tool, usable both desktop and online. The tool automatically extracts bibliographic data from a user's document library and stores that information, and the papers and studies it helps builds, on their computer or on the cloud. It is that information that is now available with its API and on its search.

☒ SIGN IN TO RECOMMEND

 TWITTER

 SIGN IN TO E-MAIL

 PRINT

CYRUS
JUNE 18



Chemical compounds



Locations



Alzheimer's research



Grant funding



Twitter streams

Get Started @ dev.mendeley.com

JOHAN BOLLEN

 H_R -Index: 7 G_R -Index: 15

Most read publication: 71

Total number of publications: 45

Total bookmarks: 268

[\[what's this?\]](#)

Permalinks

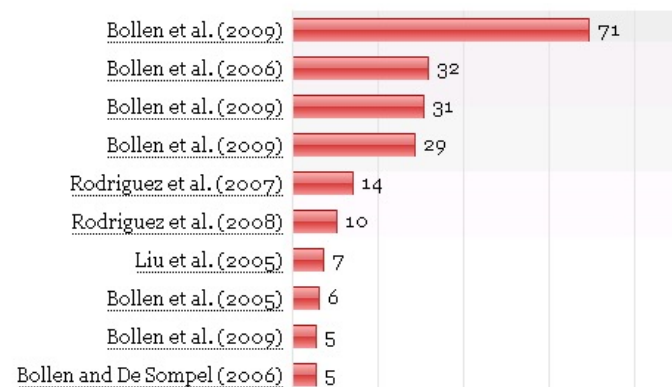
HTML: <http://readermeter.org/Bollen.Johan>JSON: <http://readermeter.org/Bollen.Johan/json>

Powered by



MENDELEY

Top 10 publications by readership (?)

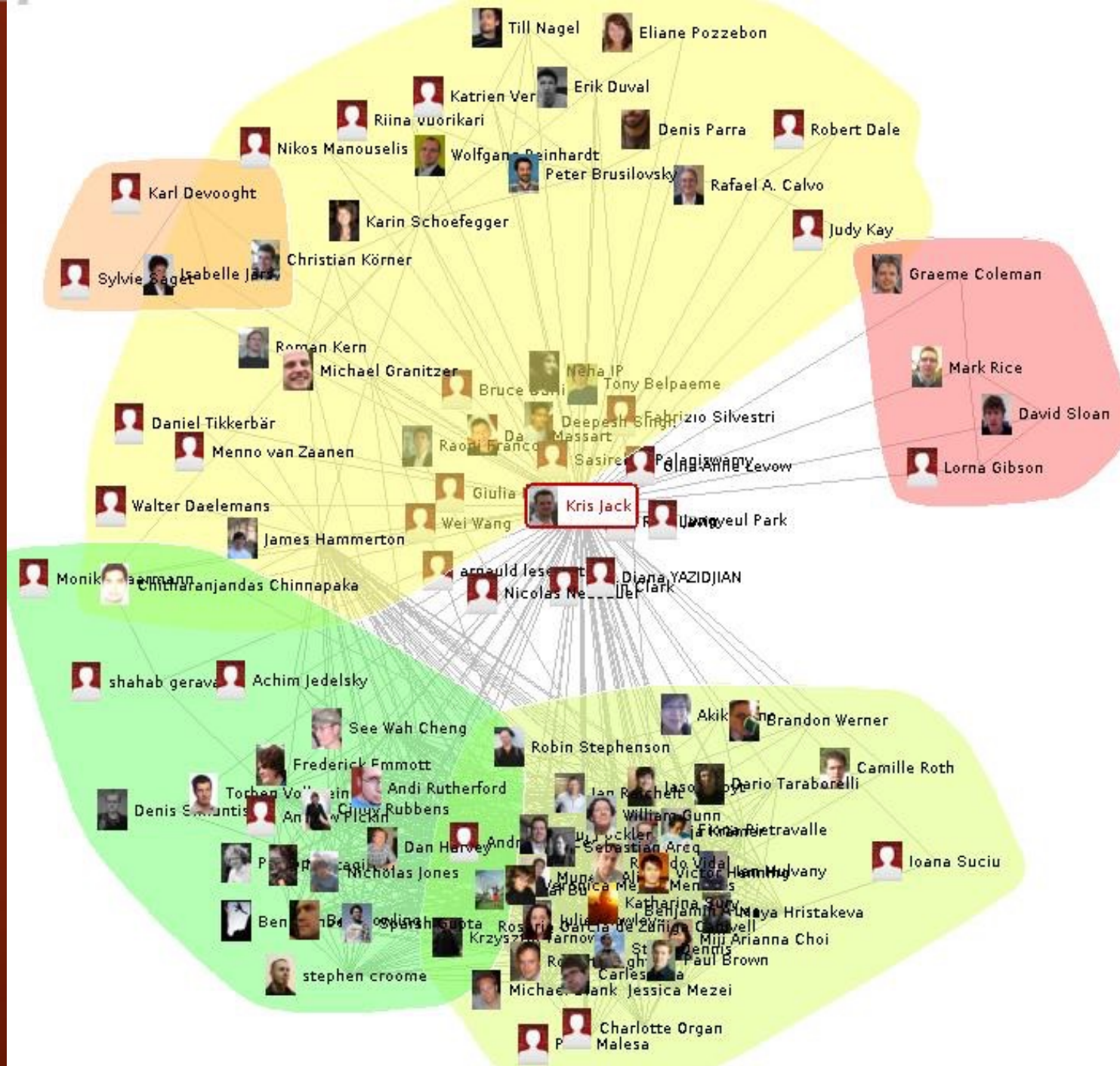
[\[show all\]](#)

Johan Bollen's coauthors

Lyudmila BALAKIREVA L L BALAKIREVA Luis BETTENCOURT B BOEHM
 W BROWN S CHAN Sheffan CHAN M CHI H CHI Ryan CHUTE
 E COLBERT Herbert Van DE SOMPEL Brad DEGRAFF
 Robert P DELLAVALLE Aravind ELANGO Carlos GERSHENSON
 Victor GREY K GUEVARA Aric HAGBERG R W HANSON
 Terry L HARRISON V C HASCALL Francis HEYLIGHEN H HUANG
 Gordon KEATING G KIM M KRIVOKON Michael J KURTZ A LAM B LEE
 P LI Xiaoming LIU Rick LUCE Thomas LUTKENHOUSE
 Diana MANGALAGIU Huina MAO Frank MCCOWN F MULIAWAN
 Michael L NELSON Michael NELSON V NGUYEN M PATEL J PEARSON
 Alberto PEPE A PEPE Steen RASMUSSEN Luis M ROCHA
 Marko A RODRIGUEZ M A RODRIGUEZ Marko RODRIGUEZ
 Lisa M SCHILLING Joan SMITH Joan A SMITH Herbert Van De SOMPEL
 Daniel J STEINBOCK Tojo THATCHENKERY H VAN DE SOMPEL
 Herbert VAN DE SOMPEL J WARD Jennifer H WATKINS Hans ZIOCK

Johan Bollen's alternate spellings

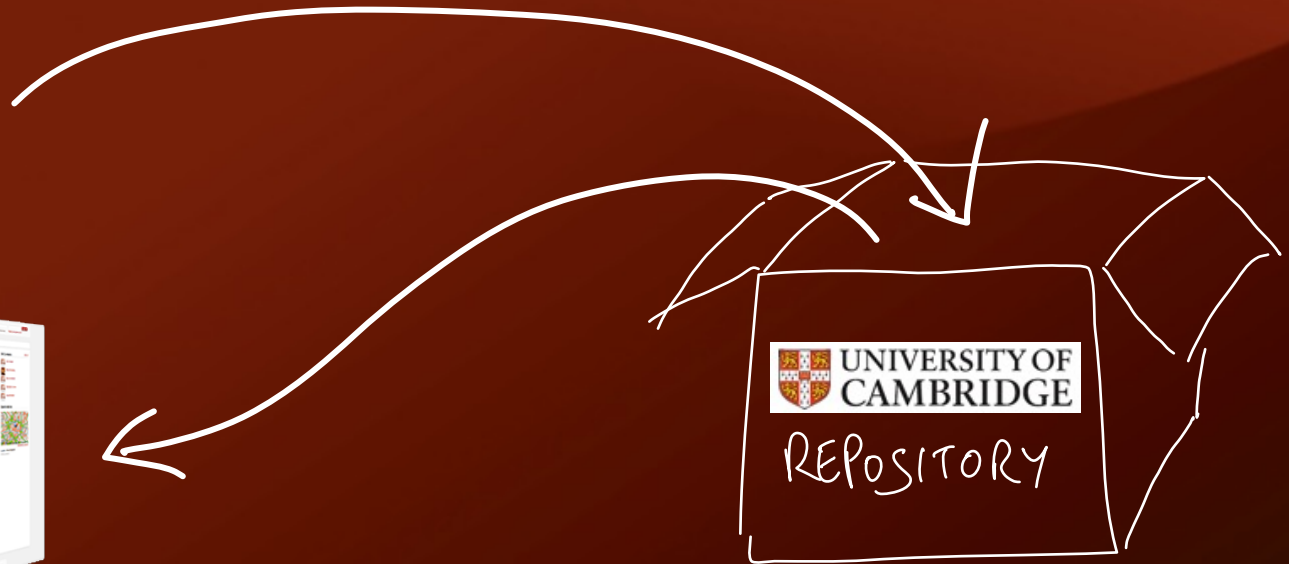
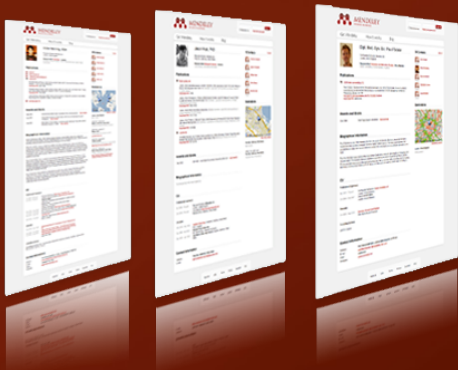
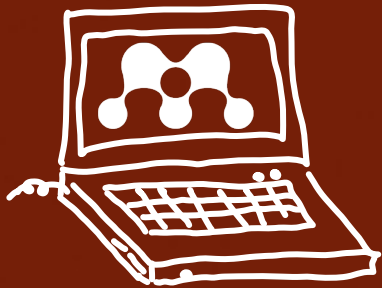
[Johann BOLLEN](#)
[J BOLLEN](#)

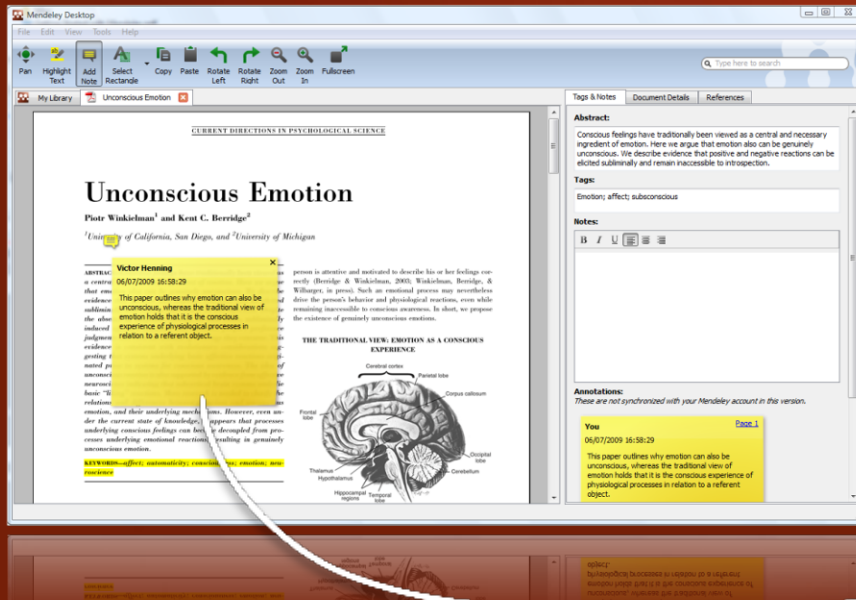


JISC DURA Project

<http://jisc-dura.blogspot.com>

↓
DIRECT USER REPOSITORY ACCESS

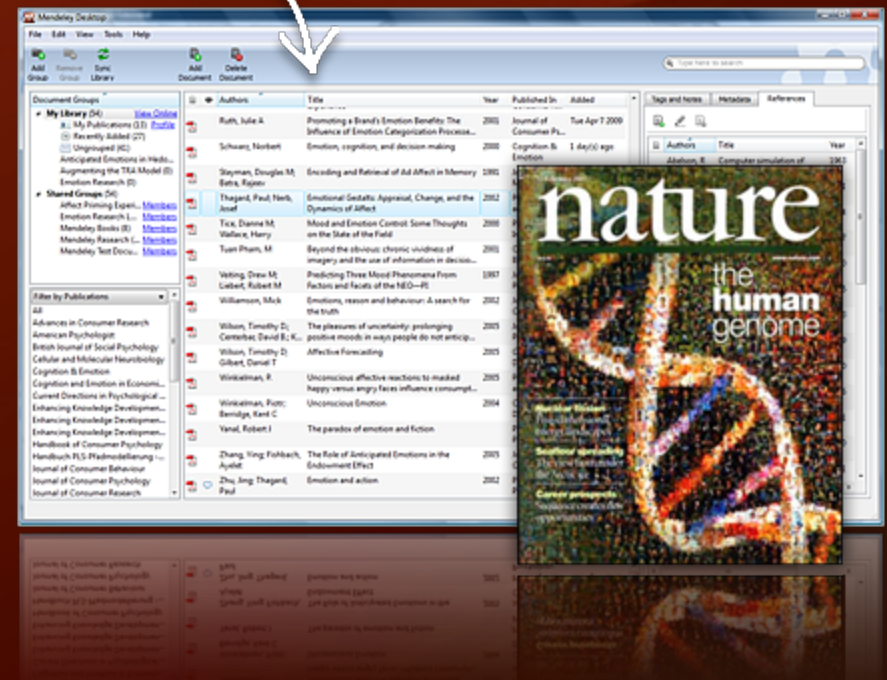




select relation: ▾

supports
refutes
complements
uses same method
...

Result:
A human-curated,
constantly evolving
semantic article database



MENDELEY

www.mendeley.com

THANK
YOU!

william.gunn@mendeley.com

