



Coalition for Networked Information

# From Principles to Practice: Developing Artificial Intelligence Applications for Discovery in the Academic Library Space

Keven Jeffery, San Diego State University, [kjeffery@sdsu.edu](mailto:kjeffery@sdsu.edu)

Michael Napoleone, EBSCO, [mnapoleone@ebSCO.com](mailto:mnapoleone@ebSCO.com)

Lucy Campbell, San Diego State University, [lucycampbell@sdsu.edu](mailto:lucycampbell@sdsu.edu)

Matthew Hartman, Stony Brook University, [matthew.hartman@stonybrook.edu](mailto:matthew.hartman@stonybrook.edu)

Timothy Kohn, Stony Brook University, [timothy.kohn@stonybrook.edu](mailto:timothy.kohn@stonybrook.edu)

As artificial intelligence (AI) continues to transform research and discovery, libraries and information providers are developing search tools that complement human expertise and enhance the discovery experience. This panel will compare different approaches to AI-enabled library search, focusing on architectures that leverage large language models to infer user intent, identify entities and constraints, and generate transparent, Boolean-compatible queries. The discussion will also explore the use of agentic frameworks to ground outputs and coordinate multi-step search workflows. Panelists will examine how natural language processing can map user questions to more relevant, context-aware results, and how principles of transparency, accessibility, and critical literacy are shaping system design and deployment. The conversation will consider how libraries can help guide the evolution of AI-powered search, address ethical and technical challenges, and develop frameworks that align these technologies with the mission and values of higher education.

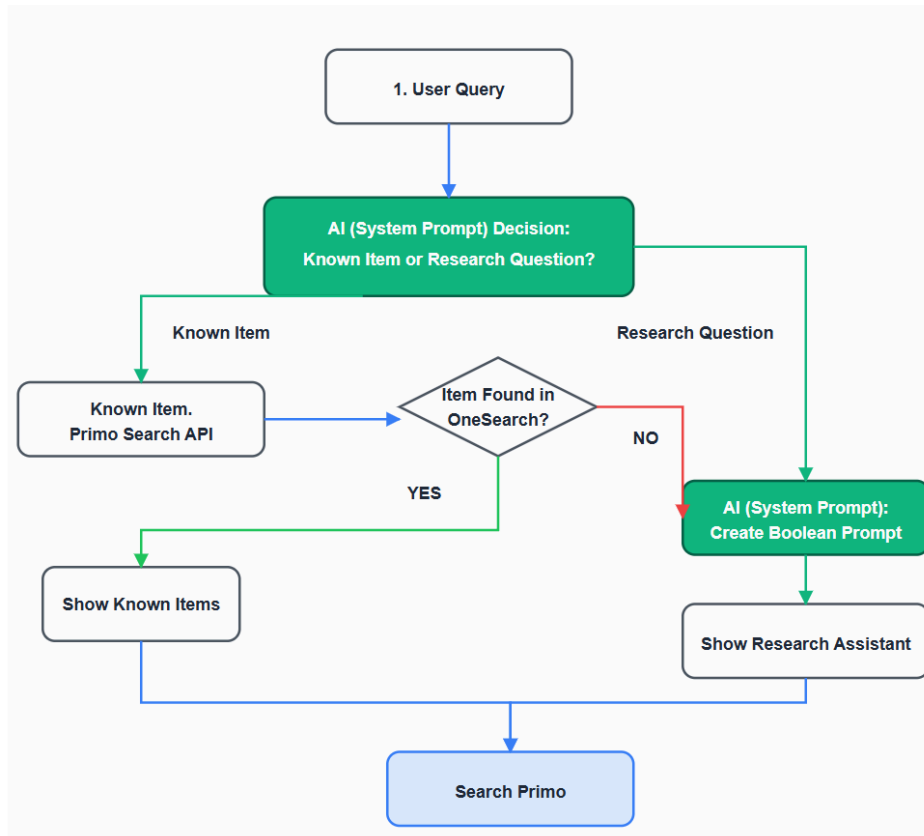


Coalition for Networked Information

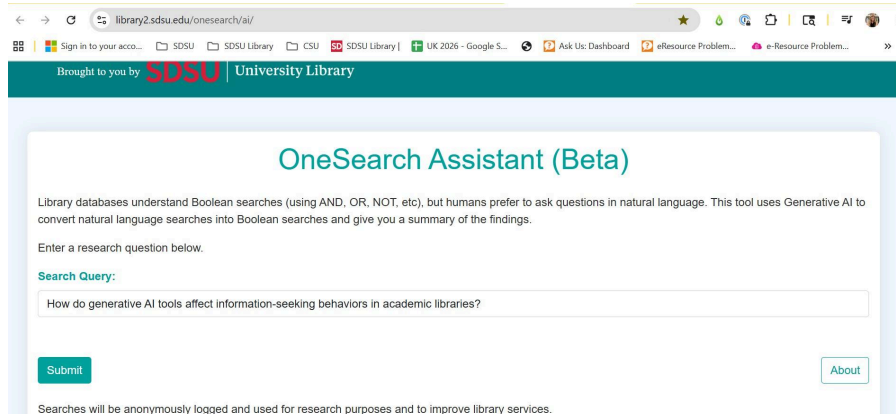
## San Diego State University

- OneSearch AI Assistant (Beta): <https://library2.sdsu.edu/onesearch/ai>
- AI at SDSU Library: <https://libguides.sdsu.edu/AI/library>

### SDSU Diagram



### SDSU Interface



Thursday, December 11, 2025

New Search

## Your Search

Your search will list about **135** results in OneSearch.

You asked: **How do generative AI tools affect information-seeking behaviors in academic libraries?**

Your Boolean Search: ("Generative AI" OR "Artificial Intelligence" OR "Machine Learning") AND (Academic Library OR "University Library" OR "College Library") AND ("Information Seeking" OR "Research Behavior" OR "Library User") AND ("Impact" OR "Influence" OR "Effect")

1  
[Review Your Results](#)

2  
[Modify Your Search](#)

3  
[Search in OneSearch](#)

## Review Your Results

Here's the type of information your search is getting.

### Key Takeaways

1. Studies have shown that students and health professionals are increasingly using generative AI applications, but there is a need for guidance on how to effectively use these tools.
2. The adoption of generative AI in healthcare settings is measurable, with certain patient-facing roles exhibiting higher usage rates, but more research is needed to understand the impact on clinical workflows and patient decision-making.
3. The current evidence regarding measurable educational outcomes of AI-powered interventions in health professionals education is poor, highlighting the need for further studies with a rigorous methodological approach.

### Keywords

1. Generative AI
2. Health Professionals Education
3. Artificial Intelligence
4. Student Use of AI
5. Healthcare Adoption of AI
6. AI-Powered Interventions
7. Educational Outcomes
8. Medical Education
9. Digital Literacy
10. Technology in Healthcare

[▼ See articles used in the summary. ▼](#)

### How do you like these results?

Happy

Neutral

Sad

## Search in OneSearch

Let's use your search in the library's discovery system.

Search Query:

["Generative AI" OR "Artificial Intelligence" OR "Machine Learning"] AND (Academic Library OR "University Library" OR "College Library") AND ("Information Seeking" OR "Research Behavior" OR "Library User") AND ("Impact" OR "Influence" OR "Effect")
✎

Limit to:

Articles  
 Peer-Reviewed Only

Books  
 SDSU TV

Additional Filters:

Limit to Last 10 Years

Online Only

[Search OneSearch](#)

### Quick Searches:

[See All 124 Articles](#)

[See All 1 Books](#)

[See All 135 Results](#)

## Modify Your Search

If you don't like the summary, try a new query, or edit the Boolean string.

You Asked

How do generative AI tools affect information-seeking behaviors in academic libraries?
✎
Update

Your Boolean:

("Generative AI" OR "Artificial Intelligence" OR "Machine Learning") AND (Academic Library OR "University Library" OR "College Library") AND ("Information Seeking" OR "Research Behavior" OR "Library User") AND ("Impact" OR "Influence" OR "Effect")
✎
Edit

## Database Operators

The most common Boolean operators used in database searches.

A OR B

A AND B

A NOT B

**OR:** Items with either term, or both terms, are found. Digital OR Electronic

**AND:** Items with both terms are found. Digital AND Media

**NOT:** Items with the 2nd term will not be found. Digital NOT Media

**Quotes:** Items with the quoted phrase will be found. "Digital Literacy"

**Parentheses (|):** Combines a set before the next action is done. (Digital OR Electronic) AND Literacy

**Asterisk\*:** Truncates the term and returns any suffix. Litera\* returns literacy or literale or literal

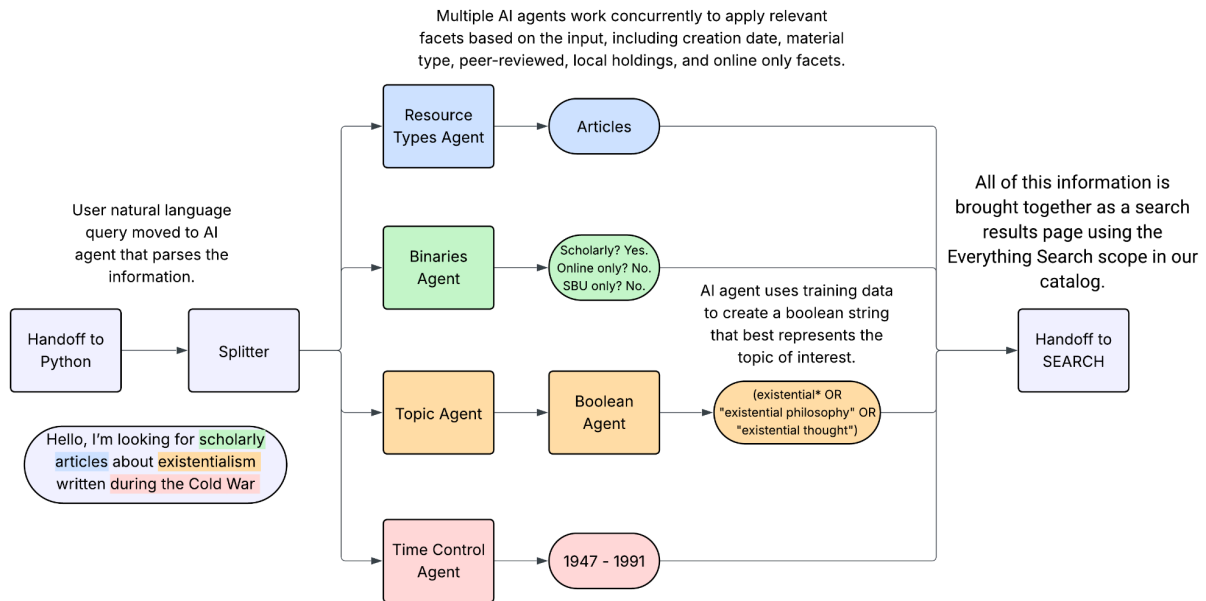


Coalition for Networked Information

# Stony Brook University

[About SEARCH AI](#) | [GitHub Repo](#) | [Try it on our website](#) | [AI Transparency at SBU Libraries](#)

## Stony Brook Diagram



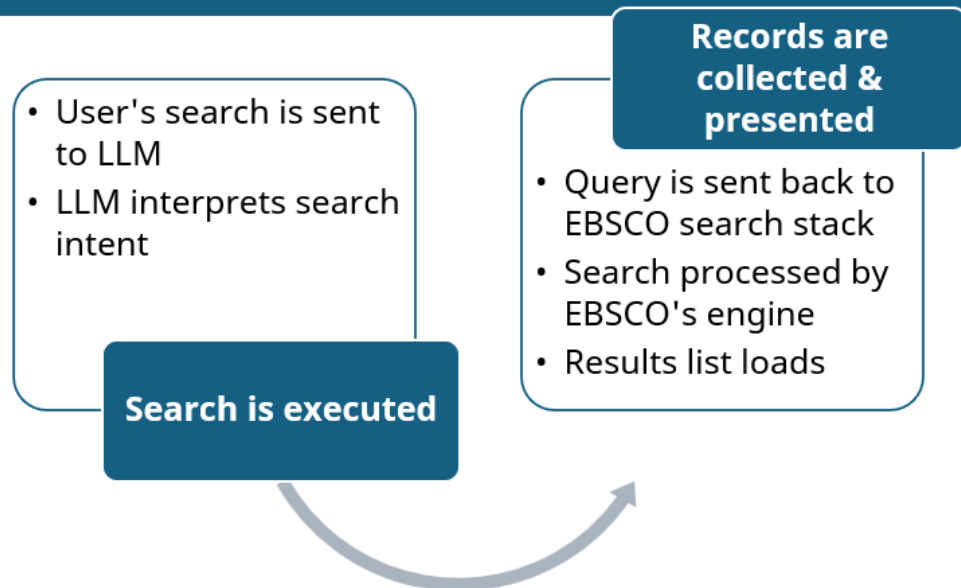
## Stony Brook Interface

## EBSCO

- EBSCO Demo site to try Natural Language Search (NLS): <https://research.ebsco.com/c/y/m4lv/search>
- EBSCO Connect documentation on NLS: <https://connect.ebsco.com/s/article/Coming-soon-Introducing-EBSCOs-AI-Natural-Language-Search-Mode>
- EBSCO Connect documentation on Recommended Searches when using NLS: <https://connect.ebsco.com/s/article/GenAI-Recommended-Search-Queries-Frequently-Asked-Questions>
- AI at EBSCO – General approach: <https://about.ebsco.com/artificial-intelligence>

## EBSCO Diagram

### How does EBSCO's NLS work?





Coalition for Networked Information

## EBSCO Interface

Searching: EBSCO Discovery Service

what's the climate change impact on agriculture in united states?

All filters Full Text Online Peer reviewed All time Source type

Natural language search <sup>beta</sup> Natural language search enhances ease of use and is continuously improving to deliver more contextual results.  
("climate change" OR "global warming") AND ("impact" OR "effect") AND ("agriculture" OR "farming") AND ("United States" OR "U.S." OR "USA") [Show less](#)

Results: 2,071,553 Show: 20 Relevance

Does Social Media impact rates of depression in high school students?

All filters (1) Peer Reviewed Full Text All time Source type

Natural Language Search [How does it work?](#) [Show refined query](#)

**✦ You may also ask...**

- [How does social media usage affect the mental health of high school students?](#)
- [Are there correlations between social media activity and depression levels among teenagers?](#)
- [What are the potential psychological effects of social media on high school students' well-being?](#)